

Instruction Manual

11" x 60" Scalperator

Style CMP2P

Manual Number 478

CARTER DAY

**Carter Day International, Inc.
500 73rd Avenue N.E., Minneapolis, MN 55432
Phone: (763) 571-1000 * Fax: (763) 571-3012**

*READ AND FOLLOW THE GUIDELINES ESTABLISHED WITHIN THIS
MANUAL TO ENSURE WARRANTY COVERAGE AND YEARS OF LOW-
COST OPERATION.*

***** WARNING *****

INTERNAL MOVING PARTS CAN BE DANGEROUS.

BEFORE ATTEMPTING SERVICE OR INTERNAL INSPECTION,
DISCONNECT AND LOCKOUT ELECTRIC POWER.

DO NOT OPERATE THIS EQUIPMENT WITHOUT REQUIRED
SAFETY GUARDS OR COVERS IN PLACE.

KEEP HANDS CLEAR OF INLETS AND OUTLETS.

CARTER DAY

IMPORTANT

Shown below is an example of a nameplate from a Carter Day machine. Please locate the nameplate on your machine and fill in the Order No., Serial No., and Style No. from it onto the nameplate on this page, for future reference. Having this information at hand when you call us for parts or service will be helpful.

ORDER NO.	<input type="text"/>
SERIAL NO.	<input type="text"/>
STYLE NO.	<input type="text"/>
MANUFACTURED IN U.S.A. BY Carter-Day Company 500 73rd Ave., N.E., Minneapolis, MN 55432	

Carter Day International, Inc.

Machinery Storage Requirements

Machinery should be placed into service as soon as possible after delivery.

If storage is required Carter Day recommends the following storage guidelines for its finished products.

While in storage machinery should be protected from corrosion and contamination.

The storage area temperature should be maintained between 0 degrees C (32 degrees F) and 40 degrees C (104 degrees F), temperature fluctuations should be limited to no more than 5 degrees C per 24 hour period.

The relative humidity should be maintained below 60%.

The storage area should be kept free from airborne contaminants such as, but not limited to: dust, dirt, harmful vapors, etc.

The storage area should be isolated from undue vibration.

Extreme conditions of any kind should be avoided.

If storage exceeds one month, shafts should be rotated monthly to insure proper lubrication of the bearings.

Failure to follow these guidelines may result in reduced product performance and component life. Equipment failure attributable to corrosion or contamination will not be covered by warranty. For example corrosion will cause shaft bearing failures, typically indicated by high bearing temperatures.

SCALPERATOR

TABLE OF CONTENTS

	PAGE
PRE-INSTALLATION CHECK	85-218
INSTALLATION	85-219
FEED SPOUT NOTE	
TEST RUN	85-220
OPERATION	85-211
SPOUTING	
FEED ADJUSTMENT	
SCALPING ADJUSTMENT	
ASPIRATION ADJUSTMENT	
CLEANOUT	
FACTORY TESTING SERVICE	85-223
MAINTENANCE / LUBRICATION	85-224
TO ORDER PARTS	85-226
APPENDICES	
PARTS LIST	
DRAWINGS	

PRE-INSTALLATION CHECK

Be certain to check equipment as soon as it arrives. A quick visual inspection will generally show any damage which may have occurred during transit from the factory. Once this inspection is complete, ensure that all shipping blocks and packing materials are removed!

The section of this manual dealing with installation should be read carefully to ensure that any items shipped loose or wired to the equipment are assembled before proceeding! If the unit was shipped with motors - now would also be a good time to check voltages. All equipment is test run for a short period before leaving the factory - however a rough and/or long transport can loosen bolts. Check all bolts visually and also with proper tools where this is practical. Pay particular attention to auxiliary items which may be bolted to the machine proper. These could include drive bases, screw conveyors, spouts, ladders, platforms etc.

All machinery leaves the factory suitably protected from the elements. These protective measures have been designed to accommodate a normal ship and installation schedule. If the equipment will be subjected to weather for more than a few days before installation - special arrangements should be made to keep it dry. An accumulation of moisture on sensitive parts could lead to premature failure and unnecessary maintenance costs.

INSTALLATION

Depending on application and particular model, the scalperator is mounted directly to the top deck of the machine proper or to a support frame supplied. In either case, it is important that the machine be solidly mounted to ensure proper operation. It must be level and/or plumb to ensure that all moving parts are in correct alignment.

When the machine is mounted, be certain that the discharge is properly aligned with the inlet of the machine proper. This is necessary to ensure free flow of material as well as dust free operation.

FEED SPOUT NOTE

The feed to the scalperator inlet hopper should be as close to centre and as near a vertical drop as possible. Feeding at an angle or to one side may result in an uneven distribution of material to the scalping reel and subsequent poor scalping and aspiration performance.

If the unit was shipped without motors - these can now be installed. Always ensure that belts and/or chains are in proper alignment and tension. Arrows indicate proper rotation of various parts and wiring should be done to suit. If no rotational arrow can be found - call the factory or your representative for information.

TEST RUN

Before connecting feed and discharge spouting all motors should be turned on and the equipment should be run dry for a minimum of 10 - 15 minutes. Once the machine is processing material noise levels will be much greater and minor mechanical problems may go unnoticed.

Specifically, check the following:

- All motors should be rotating in the proper direction
- Motor running amps should be checked against name plate.
- Belts and chains should be tight and in alignment.
- The scalping reel should be rotating at 18 RPM.
- If the machine is equipped with a feed gate only, it should be checked for free travel in its guides.
- If so equipped check scalper fan(s) for proper rotation and RPM as per installation print. If more than a slight vibration is felt on housing(s) or shaft, consult the factory immediately.
- Ensure that air liftings discharge screw door swings freely and does not bind.

All bearings and/or gearboxes have been pre-serviced at the factory. See maintenance section for further lubrication instruction and schedules.

*** ANY GUARDS REMOVED TO INSTALL MOTORS / DRIVES ETC. MUST BE IN PLACE AT ALL TIMES WHEN EQUIPMENT IS OPERATING.

OPERATION

SPOUTING

The scalperator will operate most efficiently if a good head of material is maintained in the feed hopper. Most models have view ports so that the amount of material in the hopper is visible at all times.

See installation section of this manual: Feed Spout Note

There will be 4 types of material discharged from the machine. Each should be spouted according to system requirements.

- Clean grain will drop directly out of the main bottom discharge and into processing equipment below.
- Heavier air liftings from the expansion chamber discharged out the side of the machine by a screw conveyor.
- Scalpings or roughage are carried over the scalping reel and fall into a collecting hopper. A box or sack can be used here since normally this is not a large volume of material.
- Light dust passes thru the air discharge and to a dust collection system. See the installation print for machine air requirements and size the system accordingly.

NOTE FANLESS MODELS

If the machine is a fanless model - it is recommended that a blast gate or throttling device be installed near the air outlet of the machine. This is necessary to adjust the amount of air being pulled thru the scalperator. In any case the maximum amount of air provided to the machine should not exceed the requirement as per the installation print.

OPERATION CONTINUED

FEED ADJUSTMENT - GATE TYPE

On models equipped with a rack and pinion style feed gate, simply increase the opening until the desired rate of feed to the scalping reel is maintained. The volume will be determined by particular system requirements or until the scalping reel is flooded and begins to discharge good product along with the straws and trash over the reel.

On some low volume applications where the gate is open less than 1" - 1-1/2" it will be necessary to periodically check for bridging at the gate. An uneven distribution of feed to the scalping reel will result in poor product aspiration.

FEED ADJUSTMENT - ROLL TYPE

On this type of feeder, volume can be controlled in a number of ways. It can be adjusted by increasing or decreasing the gap between the roll itself and the wrap plate. Resetting of the stop screws on each side of the machine is all that is required.

The tension of the wrap plate against the roll will also control product flow. This is set by increasing or decreasing the spring force and resetting of the counterweights.

A little experimentation with the various adjustments will quickly give the proper relationship between wrap plate gap and tension. Be certain to adjust both sides equally or uneven feed may result across the width of the roll. In addition, on fragile product, maintain minimum necessary tension of the wrap plate to reduce product damage.

On models equipped with a variable speed feed roll, the volume can be adjusted by controlling the RPM. Most models equipped in this manner are capable of speeds ranging from 1 - 20 RPM.

SCALPING ADJUSTMENT

Most models are equipped with an adjustable plate behind the scalping reel. This "Grain Line" setting should be adjusted according to the feed rate. The material being processed should be allowed to build up high enough on the scalping reel to allow roughage and trash to be carried over.

Typically, at the high feed rates the plate should be in the lower setting or, the lower the feed rate - the higher the plate setting.

OPERATION CONTINUED

ASPIRATION ADJUSTMENT

Suction in the aspiration column is adjusted by means of an air bypass valve on the top deck of the machine. Maximum air is available when this gate is fully closed.

A simple method of setting is to adjust the gate until a small amount of good product is being discharged from the liftings screw and then reduce air by opening the bypass valve slightly.

On some applications it may be desirable to lift the odd good kernel to ensure the most complete aspiration possible.

CLEANOUT

The "Grain Line" plate behind the scalping reel will accumulate stones and various other trash over a period of time. A quick jerk on the adjustment lever while the machine is running will force the material over the reel and out.

On models equipped with a feed roll under the scalping reel a quick opening cleanout door is provided and should be checked periodically.

The air liftings conveyor is also generally supplied with a door of this type.

FACTORY TESTING SERVICE

In the event of a problem on a particular separation, contact the factory and submit a 5 lbs. sample of the material. A laboratory test will be run to duplicate the operation of the machine. An analysis of results and a recommendation will then be made.

MAINTENANCE / LUBRICATION

BEARINGS

There are two types of bearings used on this equipment. The sealed variety requires no maintenance and cannot be greased. The other style, usually found on fan and conveyor shafts, is indicated by a grease fitting on the bearing flange. The number and location of each type varies from one model to another.

The greaseable type should be serviced every 500 hours of operation. Use good quality 220 SUS viscosity grease.

The following or their equivalents are recommended:

CHEVRON SRI - 2

SHELL ALANIA - #2

ESSO UNITOL

CHAINS

These should be checked approximately every 500 hours along with the bearings. Tension and alignment should be checked and adjusted as required. A small amount of light motor oil should be applied.

Improper tension and/or alignment will cause premature wear or breakage and may also damage sprockets.

FRICION CLUTCH

This assembly drives the scalping reel and provides protection in the event of a major blockage at the reel. It should be checked periodically by the operator and the clutch band tightened if slippage is evident. DO NOT OVER TIGHTEN ! A pull of approximately 90# should be necessary to cause the inner drum to slip.

MAINTENANCE / LUBRICATION CONTINUED

GEARBOX

Units are filled at the factory and should be checked periodically for leaking seals.

The factory fill meets requirements for operation in the -20 degrees F to +90 degrees F range and should be suitable for most applications.

After the initial break in period of 90 days - change intervals should be once a year.

Consult the factory for recommendations in severe applications.

The following or their equivalents are recommended:

ESSO SPARTAN ALL SEASON

MOBIL 66W SUPER CYLINDER OIL

STANDARD CHEVRON CMPD 140

TO ORDER PARTS

The appendix of this manual includes an indented parts list. This list, together with various drawings also included, makes it possible to identify the various components of the machine. When ordering parts, have the manual handy and try to identify the piece required by number and description.

Since equipment is constantly being updated and improved, the MODEL, STYLE and SERIAL NUMBER should also be quoted. This information is usually found on the front sheet. If for some reason the manual is not available, the information is also found on the metal tag affixed to the machine.

All of the above data is essential if parts are to be supplied quickly and correctly.

The following information would also be helpful when inquiring about a particular machine:

- A) JOB NUMBER

- B) APPROXIMATE SHIPPING DATE

- C) APPROXIMATE RUNNING TIME

**P
A
R
T
S

L
I
S
T**

PARENT ITEM NO.	DESCRIPTION	STYCMP2P SCALPERATOR 11X60	QTY	1	ITEM TYPE	1	LOW LEVEL	01			
9901127	ENGR DRAW				UNIT MEAS	EA	PLANNER	1			
	STANDARD BATCH QUANTITY		1.000								
LL CD	COMPONENT ITEM NO.	DESCRIPTION	ENGINEERING DRAWING NUMBER	QUANTITY PER	ITEM UM	TYP	QPT NO.	FIRST OP SEQ	LT ADJ	EFFECTIVE DATES FROM	TO
02	W10037	SEAL SHEEPSKIN 3X6	ND	2.000	EA	2					
02	W10051	TORQUE LIMITER T35L 1.125 B	BROWNING	2.000	EA	4					
02	W10060	BRG FLG 4H FY1-1/2	SKF	8.000	EA	4					
02	W10099	BRACKET BRG LOWER AIR CONTROL	SD-A4335 REV B	1.000	EA	2					
02	W10161	PLATE SERIAL NUMBER	SD-D12877	1.000	EA	4					
02	W10162	DECAL CAUTION SCREW CONVEYOR		1.000	EA	4					
02	W11025	SHAFT AIR VALVE 5/8D X61.75	SD-A5058 REV B	1.000	EA	2					
02	W11031	CUITRAIN AIR SEAL 11X60	SD-B4097 REV D	1.000	EA	2					
02	W11032	PLATE FRONT DISCH 11X60	SD-B4098 REV B	1.000	EA	2					
02	W11033	PLATE FILLER TOP 11X60	SD-B4099 REV C	1.000	EA	2					
02	W11034	VALVE AIR BYPASS 11X60	SD-B5057 REV00	1.000	EA	2					
02	W11039	PLATE TOP AIR DUCT 11X60	SD-C4103 REV D	1.000	EA	2					
02	W11040	PLATE UPPER BACK EXP CHMBR	SD-C4104 REV B	1.000	EA	2					
02	W11041	PLATE TOP EXP CHMBR 11X60	SD-C4105 REV D	1.000	EA	2					
02	W11042	PLATE BACK EXP CHMBR 11X60	SD-C4106 REV E	1.000	EA	2					
02	W11043	DOOR INSPECT 11X60	SD-C4107 REV C	1.000	EA	2					
02	W11044	PLATE LOWER BACK EXP CHMBR	SD-C4108 REV F	1.000	EA	2					
02	W11045	PLATE LOWER EXP CHMBR BOT 60	SD-C4109 REV C	1.000	EA	2					
02	W11046	PLATE UPPER FRONT EXP CHMBR 60	SD-C4110 REV D	1.000	EA	2					
02	W11047	PLATE AIR DUCT MID BOT 11X60	SD-C4111 REV D	1.000	EA	2					
02	W11048	PLATE LOWER FRONT AIR DUCT 60	SD-C4112 REV E	1.000	EA	2					
02	W11052	PLATE BACK SCLPR ROLL 11X60	SD-C4118 REV C	1.000	EA	2					
02	W11053	PLATE FRONT SCLPR ROLL 11X60	SD-C4119 REV D	1.000	EA	2					
02	W11054	PLATE TOP SCLPR ROLL 11X60	SD-C4120 REV C	1.000	EA	2					
02	W11055	PLATE FRONT SCLPR ROLL 11X60	SD-C4121 REV C	1.000	EA	2					
02	W11056	PLATE SPRT FRONT SCLPR 11X60	SD-C4122 REV D	1.000	EA	2					
02	W11057	PLATE BACK DISCH 11X60	SD-C4123 REV C	1.000	EA	2					
02	W11756	PLATE BACK COVER 11X60 SCALPTR	SD-B5911 REV F	1.000	EA	2					
02	W11843	HOPPER SCALPINGS 11X60	SD-C6166 REV A	1.000	EA	2					
02	W12024	GUARD CHAIN SCALPER	SD-D6389 REV L	1.000	EA	2					
02	W12027	SHAFT COUNTER 1-1/2D X71	SD-B6395 REV-A	1.000	EA	2					
02	W12198	PLATE COVER SCALPERATOR	SD-A6489 REV A	2.000	EA	2					
02	W16362	SHAFT FEED VALVE 1SQ X64.25	SD-B8284 REV00	1.000	EA	2					
02	W4844	CLIP HINGE 5/8	SD-A690	1.000	EA	2					
02	W9942	FILLER END PLATE LH	SD-A4087 REV B	1.000	EA	2					
02	W9943	FILLER END PLATE RH	SD-A4087 REV B	1.000	EA	2					
02	W9947	PLATE COVER	SD-A4091 REV00	2.000	EA	2					
05	00280	SET COLLAR 1.065ID X1.68X.75	CM-2768 REV B	2.000	EA	4					
02	02015	BRG LH	CM20351 REV01	2.000	EA	2					
03	08911	KEY SQUARE 3/8X3/8 X1.1875	CM21257 REV04	2.000	EA	4					
03	09125	CONN BOLT 5/16-18X2.0	CD-C4363 REV A	111.000	EA	2					
03	10894	CONN BOLT 5/16-18X2.25	CD-C4363 REV A	2.000	EA	2					
02	11617	KEY SQUARE 1/4X1/4 X2.25	CM21225 REV02	1.000	EA	4					
02	15468	STUD BALANCE LEVER 1/2-13 X6	HC24887 REV02	3.000	EA	2					
02	16497	WEIGHT BALANCE LEVER	HC25292 REV01	3.000	EA	2					
04	16781	CLIP HINGE 5/16	HC 25335 REV01	6.000	EA	2					
02	16932	SPRING TENSION	HC25373 REV01	4.000	EA	4					
03	18128	CLIP HINGE 1/4	HC-25681 REV02	4.000	EA	2					

PARENT ITEM NO. 9901127 DESCRIPTION STYCMP2P SCALPERATOR 11X60 ENGR DRAW STANDARD BATCH QUANTITY 1.000 QTY 1 ITEM TYPE 1 LOW LEVEL 01 UNIT MEAS EA PLANNER 1

LL CD	COMPONENT ITEM NO.	DESCRIPTION	ENGINEERING DRAWING NUMBER	QUANTITY PER	ITEM UM TYP	OPT NO.	FIRST OP	LT ADJ	EFFECTIVE DATES FROM TO
02	19791	PLATE INDICATOR	HC26079 REV00	1.000	EA	4			
02	19933	ARM CONNECTING	HC-26103 REV00	1.000	EA	2			
03	280268	SPRKT 50A21 2.00B		1.000	EA	4			
02	280274	SPRKT 50A50 2.00B		1.000	EA	4			
02	280293	SPRKT 50B17 1.25B R50B17XX		1.000	EA	4			
02	280335	SPRKT 50B60 1.50B		1.000	EA	4			
04	284296	PLATE BACKUP SHEEPSKIN	SD-A12442 REV-A	2.000	EA	2			
03	284302	BRACKET SEAL MTG	SD-A12444 REV00	2.000	EA	2			
02	284381	STOP DOOR SCLPR ROLL 11X84	SD-B12487 REV B	1.000	EA	2			
02	284453	STOP DOOR SCLPR ROLL 11X84	SD-B12487 REV B	1.000	EA	2			
02	284992	SEAL FEED VALVE 11X60	SD-B12702 REV A	1.000	EA	2			
02	285004	PLATE BACK FEED ROLL 11X60	SD-C12705 REV00	1.000	EA	2			
02	285012	VALVE FEED 11X60	SD-C12707 REV E	1.000	EA	2			
02	285015	MOUNT GEAR MTR 11X60-104	SD-C12708 REV B	1.000	EA	2			
02	285017	SEAL FEED VALVE 11IN SCLPR	SD-A12709 REV-A	2.000	EA	2			
02	285018	PLATE BACKING 11IN SCLPR	SD-A12710 REV-A	2.000	EA	2			
02	285051	PLATE BACK FEED HOP BOTI 11X60	SD-C12108 REV B	1.000	EA	2			
02	285054	STRIP RUBBER X56.3125 11X60	SD-A4086 REV F	1.000	EA	2			
02	285123	FEED ROLL ASSY 11X60	SD-C11891 REV G	1.000	EA	0			
03	W16984	PLATE BACKING FEED ROLL 11X60	SD-B8715 REV D	12.000	EA	2			
03	285125	FEED ROLL WLOT 11X60	SD-C11891 REV G	1.000	EA	2			
03	286151	BELT FEED ROLL 11X60	SD-A13447 REV C	12.000	EA	2			
03	88180	CAP SCR G2 HH 1/4-20X.75 ZP		108.000	EA	4			
03	88470	NUT HEX G2 FULL 1/4-20 ZP	NYL INS	108.000	EA	4			
02	285596	BRACKET LIFTING 11X60	SD-B13004 REV00	2.000	EA	2			
02	285603	BRACKET LIFTING 11IN SCALPERS	SD-B13005 REV00	2.000	EA	2			
03	31116	SET COLLAR STL .625ID 1-SSCR		5.000	EA	4			
02	31350	SPRKT 50B17 1.50B	CD-A342 REV02	2.000	EA	4			
02	31628	DECAL TRADEMARK SCALPERATOR		1.000	EA	4			
02	35539	WINDOW LEXAN 4.75 SQ X.125	CD-A1272 REV01	2.000	EA	4			
03	35660	BRACKET BALANCE LEVER	CD-A1305 REV00	3.000	EA	2			
02	37780	LABEL WARNING MOVING PARTS	CD-A1616	1.000	EA	4			
02	37962	LABEL GREASE	CD-A1670 REV00	1.000	EA	4			
02	40395	HUB FEED CONTROL	CD-A1898 REV00	2.000	EA	2			
02	41135	CLIP SPRING	CD-A2076 REV03	8.000	EA	2			
03	414212	NAMEPLATE TRADEMARK CARTER DAY	2.88X16.12 PPD	2.000	EA	4			
02	41677	DECAL ARROW	CD-A2120	1.000	EA	4			
02	42550	WINDOW LEXAN 2.75X4.75 X.125	CD-A2202 REV00	2.000	EA	4			
02	60543	STUD FEED CONTROL 1/2-13 X8.75	SC-2078 REV05	2.000	EA	2			
02	60544	BRACKET FEED CONTROL	SC-2079 REV02	2.000	EA	2			
03	60624	LABEL WARNING	SC-2115 S-459	3.000	EA	4			
02	60724	STOP FEED VALVE	SC-2213 REV02	2.000	EA	2			
03	63552	CHAIN ROLLER #50 .625P RVRTD	ANSI STD	389.000	PI	3			
03	90890	LINK CONN RC #50		1.000	EA	4			
03	92086	PAINT C-D MET BLUE CER IC5057	CERAMIC IND CTG	10.000	GL	3			

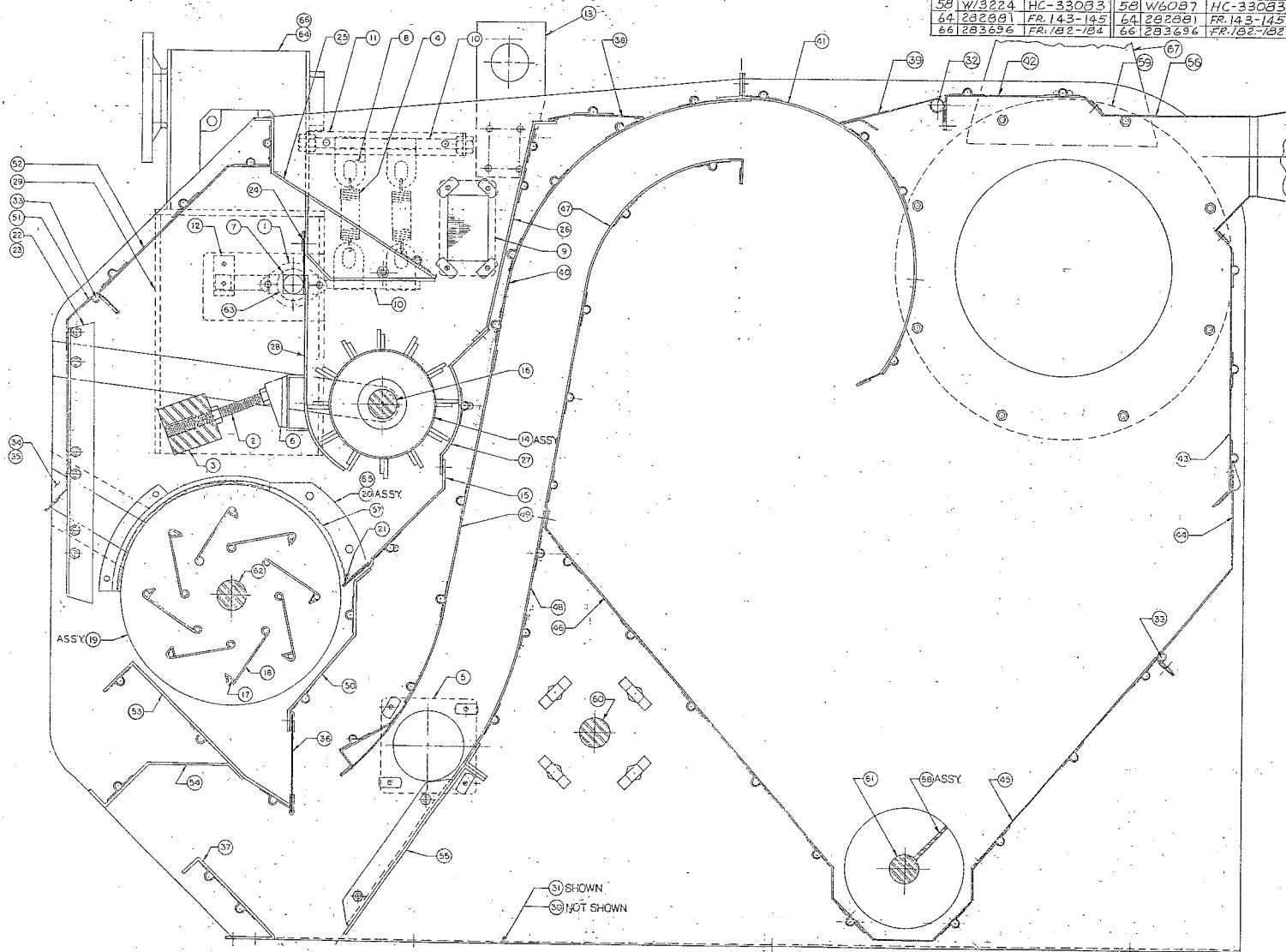
PARENT ITEM NO. 286054	DESCRIPTION SCRN SCLPR 11X60 1/2SQ ASSY ENGR DRAW SD-C5056 REV G STANDARD BATCH QUANTITY	QTY 1.000	1	ITEM TYPE 2	UNIT MEAS EA	LOW LEVEL PLANNER	00 1
---------------------------	---	--------------	---	----------------	-----------------	----------------------	---------

LL CD	COMPONENT ITEM NO.	DESCRIPTION	ENGINEERING DRAWING NUMBER	QUANTITY PER	ITEM UM TYP	OPT NO.	FIRST OP SEG	LT ADJ	EFFECTIVE DATES FROM TO
02	W11026	ROD TIE 1/4D X57.375	HC-23577 REV07	16.000	EA 2				
03	W9958	HUB SCLPR ROLL WLDY 11X84	SD-84102 REV L	2.000	EA 2				
03	19817	END RESCALPER ROLL	HC35439 REV01	2.000	EA 2				
01	286053	SCRN SCLPR 11X60 1/2SQ	SD-C4124 REV S	1.000	EA 2				
02	415545	BAFFLE SCALPER ROLL X55.7812	SC-3100 REV C	8.000	EA 2				

**D
R
A
W
I
N
G
S**

11x60 CMP2RP		11x84 CMN2RP			
NO	PART NO	DRAWING NO	NO	PART NO	DRAWING NO
29	285016	SD-C12709	29	285016	SD-C12709
30	285127	SD-D12717	30	285127	SD-D12717
31	285129	SD-D12718	31	285129	SD-D12718
58	W13224	HC-33083	58	W16087	HC-33083
64	282881	FR.143-145	64	282881	FR.143-145
66	283696	FR.182-184	66	283696	FR.182-184

11x60 CMP2P			11x84 CMN2P		
NO	PART NO	DRAWING NO	NO	PART NO	DRAWING NO
1	02015	CM-20351	1	02015	CM-20351
2	15468	HC-24887	2	15468	HC-24887
3	16497	HC-25392	3	16497	HC-25392
4	16932	HC-25373	4	16932	HC-25373
5	35539	CD-A1272	5	35539	CD-A1272
6	35660	CD-A1305	6	35660	CD-A1305
7	40395	CD-A1898	7	40395	CD-A1898
8	41135	CD-A2076	8	41135	CD-A2076
9	42550	CD-A2202	9	42550	CD-A2202
10	60543	SC-2078	10	60543	SC-2078
11	60544	SC-2079	11	60544	SC-2079
12	60724	SC-2213	12	60724	SC-2213
13	285608	SD-B13005	13	285608	SD-B13005
14	285123	SD-C11891	14	283628	SD-C11891
15	285446	SD-C12940	15	285449	SD-C12940
16	284955	SD-B12337	16	283650	SD-B12337
17	285037	HC-23571	17	284295	HC-23571
18	285039	SC-3100	18	284297	SC-3100
19	285048	SD-C12722	19	284301	SD-B4101
20	285439	SD-B12942	20	285439	SD-B12942
21	285443	SD-A12939	21	285443	SD-A12939
22	284381	SD-B12487	22	284381	SD-B12487
23	284453	SD-B12487	23	284453	SD-B12487
24	284992	SD-B12702	24	284993	SD-B12702
25	284996	SD-C12703	25	284997	SD-C12703
26	285000	SD-C12704	26	285001	SD-C12704
27	285004	SD-C12705	27	285005	SD-C12705
28	285012	SD-C12707	28	285011	SD-C12707
29	285015	SD-C12708	29	285015	SD-C12708
30	285032	SD-D12719	30	285032	SD-D12719
31	285033	SD-D12718	31	285033	SD-D12718
32	W11025	SD-A5058	32	W4436	SD-A671
33	W11027	SD-A4080	33	W9935	SD-A4080
34	W9942	SD-A4087	34	W9942	SD-A4087
35	W9943	SD-A4087	35	W9943	SD-A4087
36	W11031	SD-B4097	36	W9953	SD-B4097
37	W11032	SD-B4098	37	W9954	SD-B4098
38	W11033	SD-B4099	38	W9955	SD-B4099
39	W11034	SD-B5057	39	W9956	SD-B4100
40	W11039	SD-C4103	40	W9959	SD-C4103
41	W11040	SD-C4104	41	W9960	SD-C4104
42	W11041	SD-C4105	42	W9961	SD-C4105
43	W11042	SD-C4106	43	W9962	SD-C4106
44	W11043	SD-C4107	44	W9963	SD-C4107
45	W11044	SD-C4108	45	W9964	SD-C4108
46	W11045	SD-C4109	46	W9965	SD-C4109
47	W11046	SD-C4110	47	W9966	SD-C4110
48	W11047	SD-C4111	48	W9967	SD-C4111
49	W11048	SD-C4112	49	W9968	SD-C4112
50	285453	SD-C12941	50	285454	SD-C12941
51	W11053	SD-C4119	51	W9976	SD-C4119
52	W11054	SD-C4120	52	W9977	SD-C4120
53	W11055	SD-C4121	53	W9978	SD-C4121
54	W11056	SD-C4122	54	W9979	SD-C4122
55	W11057	SD-C4123	55	W9980	SD-C4123
56	W11058	SD-C4125	56	W9981	SD-C4125
57	W11037	N.D.	57	W11037	N.D.
58	W11747	HC-31397	58	W11069	HC-31397
59	W12198	SD-A6489	59	W12198	SD-A6489
60	W12027	SD-B6395	60	W12269	SD-B6395
61	W13757	SD-A6005	61	W13760	SD-A4556
62	W13762	SD-A4175	62	W13763	SD-A4175
63	W16362	SD-B8284	63	W16363	SD-B8284
64	W16569	FR.143-145	64	W16569	FR.143-145
65	285440	SD-B12942	65	285440	SD-B12942
66	283695	FR.182-184	66	283695	FR.182-184
67	285460	SD-A12944	67	285460	SD-A12944



S=L **CDC**
SIMON-DAY LTD. **CARTER-DAY COMPANY**
 1 Whrop, Harlow, Essex, EN11 8JL

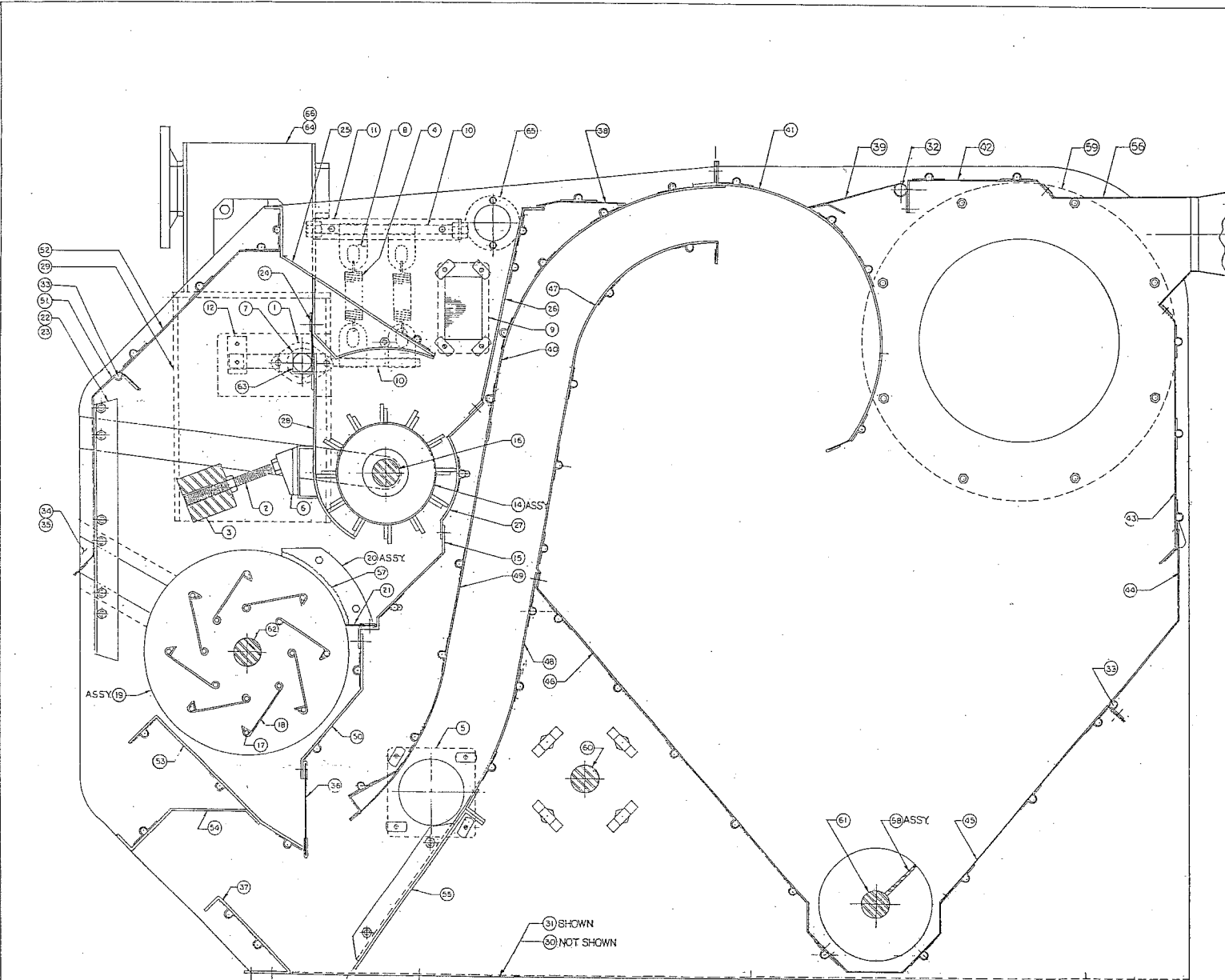
DESCRIPTION
 SECTION THRU SHEET METAL
 11x60 SCALPER (FANLESS)
 11x84 SCALPER (FANLESS)

7 3

DATE	DESIGNED BY	DATE	DESIGNED BY
1970	M.S.	1970	M.S.
1970	M.S.	1970	M.S.

DO NOT SCALE DRAWING

SD-D12905



11x60 R.H. MAIN DRIVE			11x60 L.H. MAIN DR.		
NO	PART NO	DRAWING NO	NO	PART NO	DRAWING NO
29	285076	SD-C12708	1	02015	CM-20351
30	285608	SD-D19010	2	15468	HC-24887
31	285729	SD-D12718	3	16497	HC-25292
58	W13224	HC-33083	4	16932	HC-25373
64	282881	FR.143-145	5	35539	CD-A1272
66	283696	FR.182-184	6	35660	CD-A1305
			7	40395	CD-A1898
			8	41135	CD-A2076
			9	42550	CD-A2202
			10	60543	SC-2078
			11	60544	SC-2079
			12	60724	SC-2213
			14	285123	SD-C11891
			15	285051	SD-C12108
			16	284955	SD-B12337
			17	285037	HC-23577
			18	285039	SC-3100
			19	285048	SD-C12722
			20	284302	SD-A12444
			21	285054	SD-A4086
			22	284381	SD-B12487
			23	284453	SD-B12487
			24	284992	SD-B12702
			25	284996	SD-C12703
			26	285000	SD-C12704
			27	285004	SD-C12705
			28	285012	SD-C12707
			29	285015	SD-C12708
			30	285607	SD-D19010
			31	285033	SD-D12718
			32	W11025	SD-A5058
			33	W11027	SD-A4080
			34	W9942	SD-A4087
			35	W9943	SD-A4087
			36	W11031	SD-B4097
			37	W11032	SD-B4098
			38	W11033	SD-B4099
			39	W11034	SD-B5057
			40	W11039	SD-C4103
			41	W11040	SD-C4104
			42	W11041	SD-C4105
			43	W11042	SD-C4106
			44	W11043	SD-C4107
			45	W11044	SD-C4108
			46	W11045	SD-C4109
			47	W11046	SD-C4110
			48	W11047	SD-C4111
			49	W11048	SD-C4112
			50	W11052	SD-C4118
			51	W11053	SD-C4119
			52	W11054	SD-C4120
			53	W11055	SD-C4121
			54	W11056	SD-C4122
			55	W11057	SD-C4123
			56	W11058	SD-C4125
			57	W10037	N.D.
			58	W11747	HC-31397
			59	W12198	SD-A6489
			60	W12027	SD-B6395
			61	W13757	SD-A6005
			62	285605	SD-B13008
			63	W16362	SD-B8284
			64	W16569	FR.143-145
			65	284452	SD-A12520
			66	283695	FR.182-184

31 SHOWN
32 NOT SHOWN

PART NO.

TOLERANCES UNLESS SPECIFIED	NO. BY DATE	REVISIONS	DRAWN BY	CHECKED BY	APPROVED BY
FRACTIONAL DECIMAL ANGULAR	2 1/16 0.005 1/16		CM		
DO NOT SCALE DRAWING			SCALE 3/8"	SHEET OF	

S.I. C.O.
SIMON-DAY LTD. CARTER-DAY COMPANY
Woking, Surrey Warwick, CV9

DESCRIPTION
SECTION THRU SHEET METAL

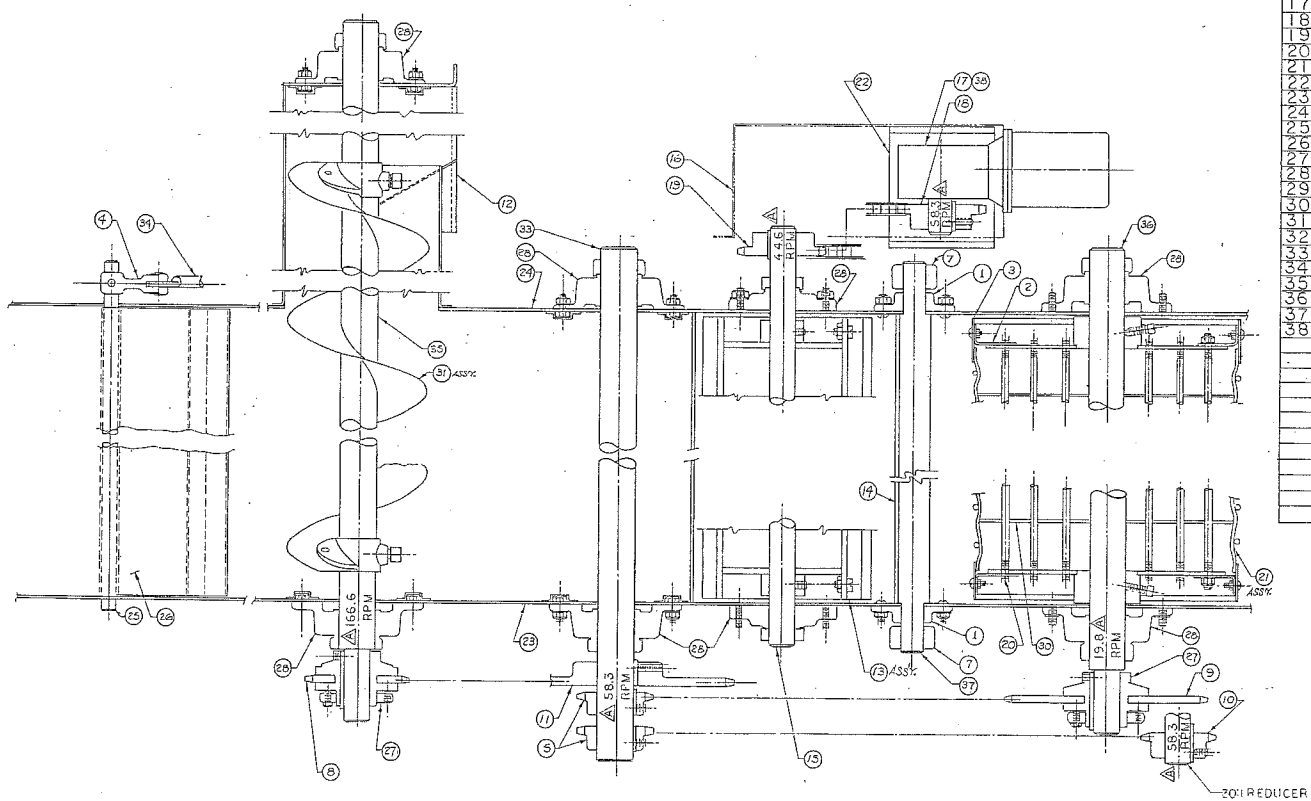
11" x 60" SCALPERATOR

SD-D13011

SDD 12900

11 x 84 CMN2RP			11 x 60 CMN2RP		
NO	PART NO	DRAWING NO	NO	PART NO	DRAWING NO
16	284351	SDC 12114	16	284351	SDC 12114
17	284270	FR 143-145	17	282881	FR 143-145
22	285020	SDD 12711	22	285068	SDD 12711
23	285127	SDD 12717	23	285127	SDD 12717
24	285129	SDD 12718	24	285129	SDD 12718
31	W60B7	33083	31	W13224	33083
36	284335	FR 182-184	36	283696	FR 182-184

11 x 84 CMN2P			11 x 60 CMN2P		
NO	PART NO	DRAWING NO	NO	PART NO	DRAWING NO
1	02015	CM 20351	1	02015	CM 20351
2	19817	35439	2	19817	35439
3	19815	35437	3	19815	35437
4	19933	26103	4	19933	26103
5	31350	CDA 342	5	31350	CDA 342
7	40395	CDA 1898	7	40395	CDA 1898
8	280268	SDA 7625	8	280268	SDA 7625
9	280274	SD B 4677	9	280274	SD B 4677
10	280293	ND	10	280293	ND
11	280335	ND	11	280335	ND
12	W10671	SD B 6003	12	W11743	SD B 6003
13	283628	SD C 11891	13	285123	SD C 11891
14	285011	SD C 12707	14	285012	SD C 12707
15	283650	SD B 12337	15	284955	SD B 12337
16	283653	SD C 12114	16	283653	SD C 12114
17	284186	FR 180-184	17	283695	FR 182-184
18	284286	ND	18	285139	ND
19	284289	ND	19	284289	ND
20	284295	HC 23577	20	285037	HC 23571
21	284301	SD B 4101	21	285048	SD C 12722
22	285019	SDD 12717	22	285067	SDC 12711
23	285032	SD D 12717	23	285032	SDD 12717
24	285033	SD D 12718	24	285033	SDD 12718
25	W4435	SDA 677	25	W11025	SDA 505B
26	W9356	SD B 4100	26	W11034	SD B 5057
27	W10051	ND	27	W10051	ND
28	W10060	ND	28	W10060	ND
29					
30	W10821	SDA 4951	30	283158	SDA 4951
31	W10669	31397	31	W11747	31397
32					
33	W12269	SD B 6395	33	W12027	SD B 6395
34	W12193	SDA 6484	34	W12193	SDA 6484
35	W13760	SDA 4556	35	W13757	SDA 6005
36	W13763	SDA 4175	36	W13762	SDA 4175
37	W16363	SD B 8294	37	W16362	SD B 8294
38	W20365	FR 140C	38	W16569	FR 143-145



SOL **COD**
SIMON-DAY LTD. **CARTER-DAY COMPANY**
 Woking, Surrey, England, Ltd.

DESCRIPTION

SECTION THRU SHAFTING
 11 x 60 SCALPER (FANLESS)
 11 x 84 SCALPER (FANLESS)

SEE SHEET I

NO. BY DATE REVISIONS

DRAWN BY JDR, DPH, HVR DATE 2/2/52, 3/3

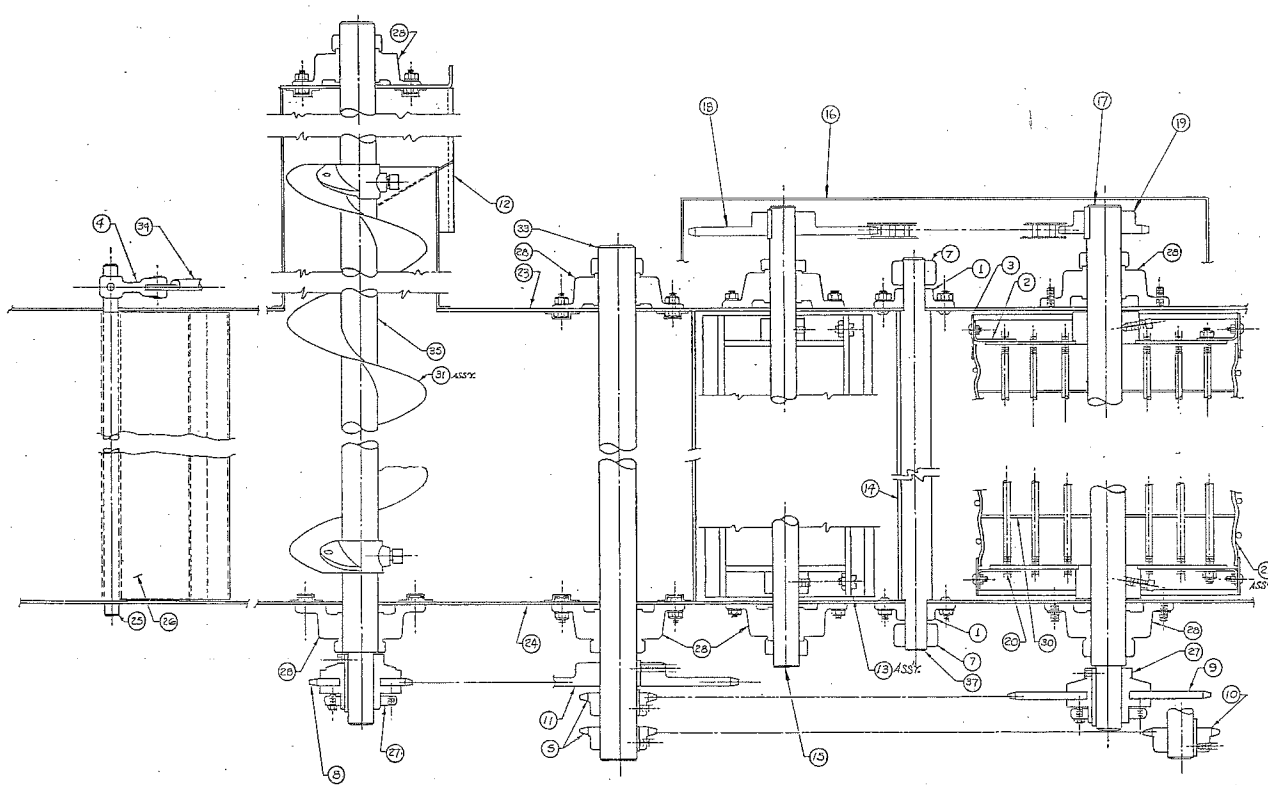
CHECKED BY SCALE

APPROVED BY

DO NOT SCALE DRAWING

SHEET 2 OF 2

SDD 12905



11' x 60" R.H. MAIN DR.			11' x 60" L.H. MAIN DR.		
NO	PART NO	DRAWING NO	NO	PART NO	DRAWING NO
			1	02015	GM 20351
			2	19817	35439
			3	19815	35437
23	289608	SD-D13010	4	19933	26103
24	285125	SDD12718	5	31380	CDA 342
31	W13224	33093	7	40395	CDA 1898
			8	280268	SDA 7625
			9	280274	SD B 4677
			10	280293	ND
			11	280335	ND
			12	W11743	SD B 6003
			13	285123	SD C 11891
			14	285012	SD C 12707
			15	284955	SD B 12337
			16	285606	SD-C13009
			17	285605	SD-B13008
			18	42086	ND
			19	40125	ND
			20	285037	HC.23571
			21	285048	SD C 12722
			23	285607	SD-D13010
			24	285033	SDD 12718
			25	W 11025	SDA 5058
			26	W 11034	SD B 5057
			27	W 10051	ND
			28	W 10060	ND
			30	283158	SDA 4951
			31	W 11747	31397
			33	W 12027	SD B 6395
			34	W 12133	SDA 6484
			35	W 13757	SDA 6005
			37	W 16362	SD B 8284

PART NO.

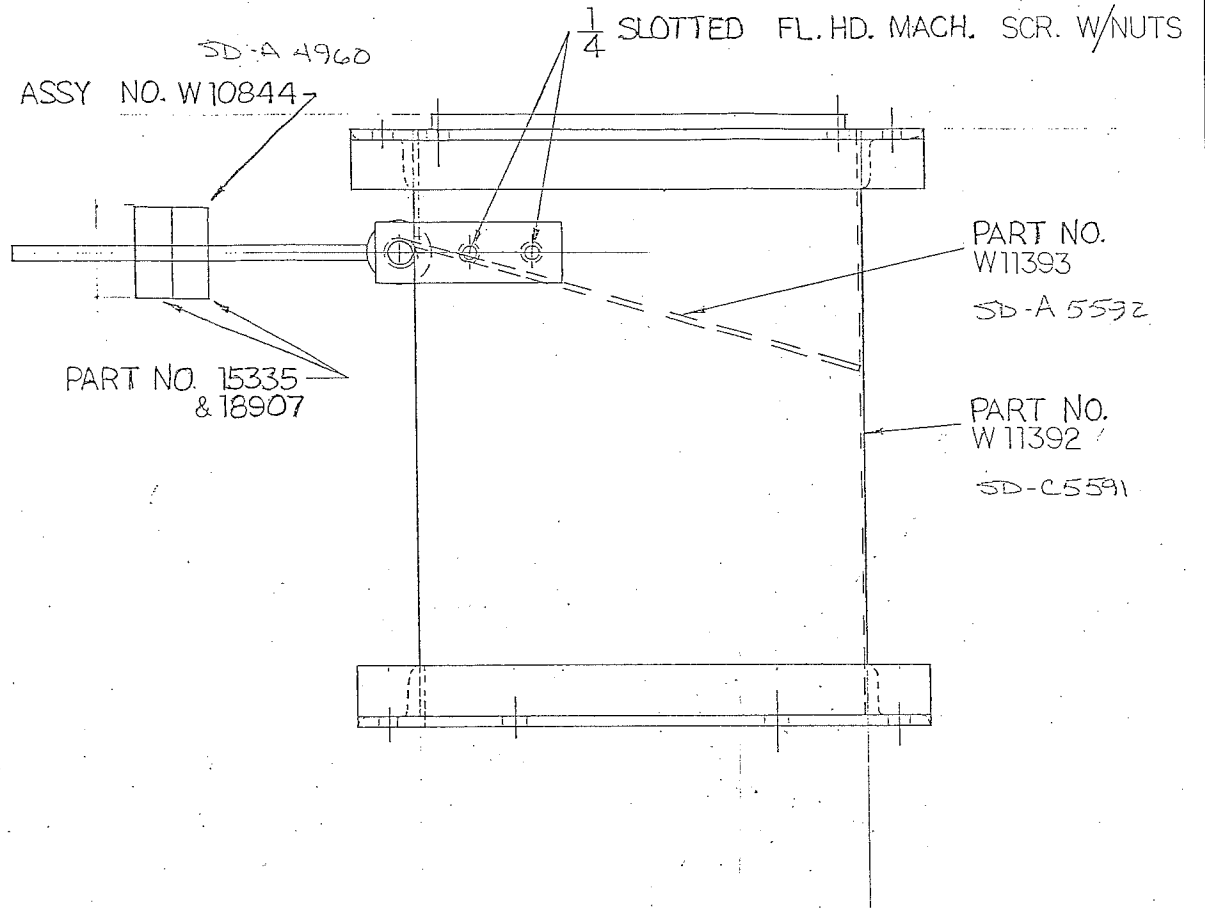
TOLERANCES UNLESS SPECIFIED		NO. BY DATE	REVISIONS	DRAWN BY	DATE
FRACTIONS	±.01"			5-C-30	5-6-50
DECIMALS	±.005"				
ANGULARS	±.1°				
DO NOT SCALE DRAWING		CHECKED BY	APPROVED BY	SHEET	OF

S-D
SIMON-DAY LTD.
Winnipeg, Manitoba

C-D
CARTER-DAY COMPANY
Minneapolis, Minn.

DESCRIPTION
SECTION THRU SHAFTING

11' x 60" SCALPERATOR
SD-D13012



24 x 76 SCALPER CTB-1, CTC-1
11 x 36 SCALPER CMYIS
PART No. W11394

FOR OPP. HAND SEE SD-B 117393

ASSY, AIR LIFTINGS DISCHARGE

DRAWN: *MS*
 DATE: 08 JUN 84
 CHK'D: *ZGW*
 ISSUED:
 SCALE: 1/2

SIMON-DAY LTD.
 Vancouver • Calgary • Winnipeg • Thunder Bay
 Toronto • Montreal
 SD-B5593

M

B	Redrawn	2 JUN 84	MS
A	Revised	7 MAY 84	MS
ISSUE	REVISION	DATE	BY

SHT: 1 OF 1

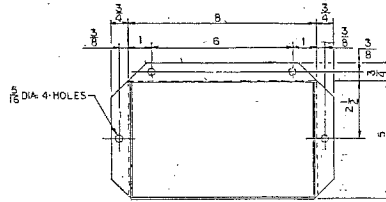
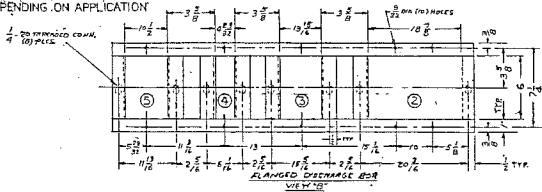
SCALPER DATA

AIR: 3900-4500 CU.-FT. PER MIN.
 DRIVE: 1 HR. GEAR MOTOR 26.2-30 BQ-02

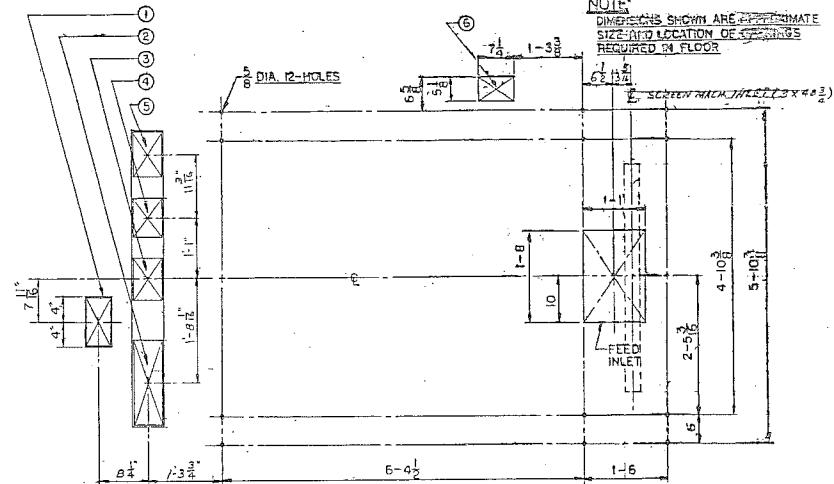
MACHINE PROPER DATA

DRIVE: 1 1/2 H.P. 1800 R.P.M. MOTOR-116
 CAPACITY: 800-900 BU. PER HR.
 *DEPENDENT ON APPLICATION

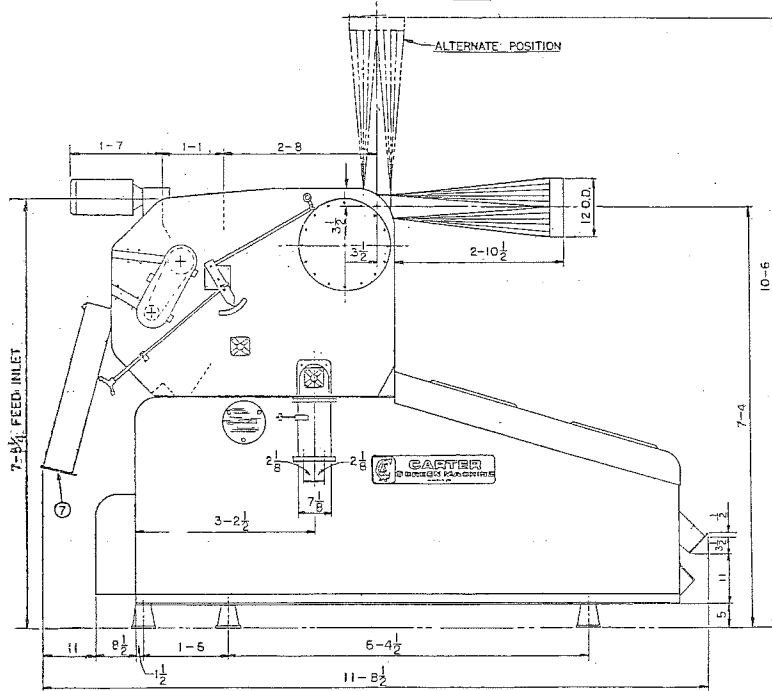
NO.	WHEN CLEANING *DEPENDING ON SCREEN SELECTIONS		
	BARLEY	WHEAT	RAPE
1	OATS, HEADS	OATS, HEADS	OATS, WHEAT, BALLS
2	OVERS OF 2ND SCREEN	CLEAN WHEAT	CLEAN RAPE
3	OVERS OF BOTTOM SCREEN	CLEAN WHEAT	CLEAN RAPE
4	THRUS OF 2ND SCREEN	CRACKS, WEED SEEDS	SMALL SEEDS, SAND
5	THRUS OF BOTTOM SCREEN	CRACKS, WEED SEEDS	SMALL SEEDS, SAND
6	AIR LIFTINGS	DUST, CHAFF, SMALL SEEDS	DUST, SMALL SEEDS
7	SCALPINGS	STICKS, STRAW	STICKS, STRAW



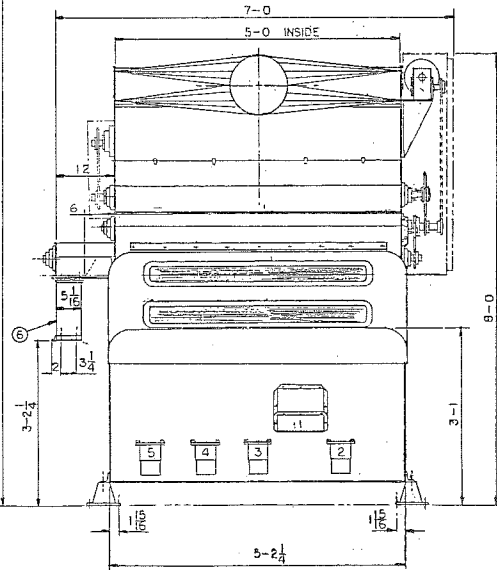
VIEW A NO. 1 DISCHARGE FLANGE



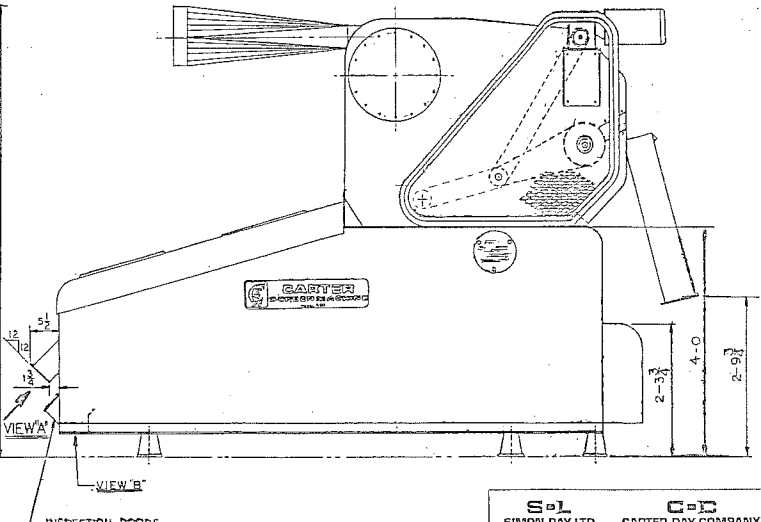
FLOOR PLAN



RIGHT SIDE VIEW



ELEVATION



LEFT SIDE VIEW

NOTE:
 DIMENSIONS SHOWN ARE APPROXIMATE
 SIZE AND LOCATION OF SCREENS
 REQUIRED IN FLOOR

SOL
 SIMON-DAY LTD. CARTER-DAY COMPANY
 Winnipeg, Manitoba Minneapolis, MN

DESCRIPTION
DATA INSTALLATION
 11" x 60" SCALPERATOR W/CONSTANT
 SPEED POSITIVE FEED ROLL.

TOLERANCES UNLESS SPECIFIED	NO. BY DATE	REMARKS	DRAWN BY	DATE
FRACTIONS 2/16"			G.H.	5-6-37
DECIMALS .001"		REVISIONS	CHECKED BY	SCALE NONE
ANGLES 1/16"		DO NOT SCALE DRAWING	APPROVED BY	INLET OF

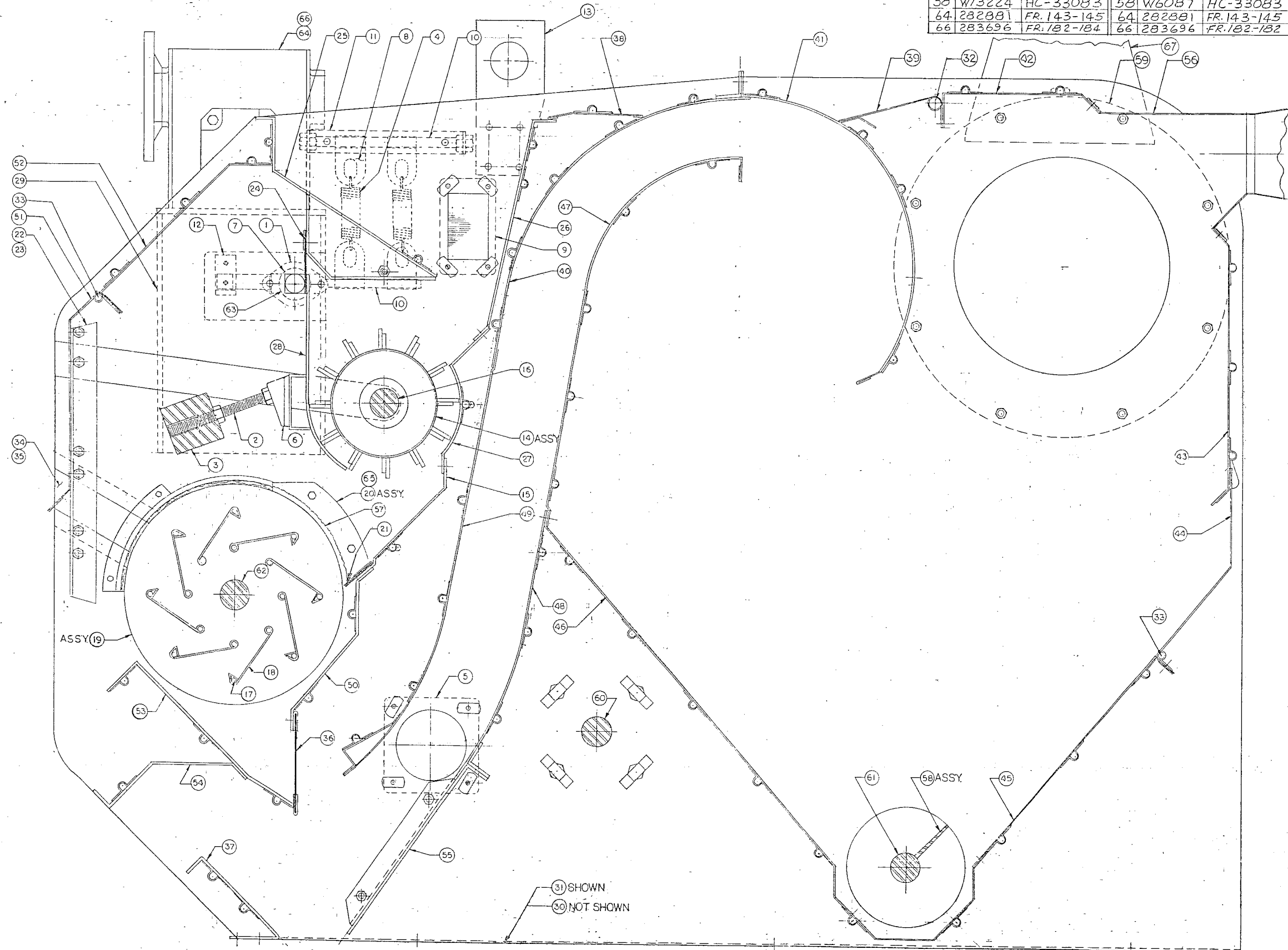
950 SCREEN MACHINE (STYLE CPS1) WITH 11x60 SCALPER (STYLE CMP2) WITH CONSTANT SPEED POSITIVE FEED ROLL.

PART NO.

SD-D13013

11x60 CMP2RP			11x84 CMN2RP		
Nº	PART Nº	DRAWING Nº	Nº	PART Nº	DRAWING Nº
29	285016	SD-C12708	29	285016	SD-C12708
30	285127	SD-D12717	30	285127	SD-D12717
31	285129	SD-D12718	31	285129	SD-D12718
58	W13224	HC-33083	58	W6087	HC-33083
64	282881	FR.143-145	64	282881	FR.143-145
66	283696	FR.182-184	66	283696	FR.182-184

11x60 CMP2P			11x84 CMN2P		
Nº	PART Nº	DRAWING Nº	Nº	PART Nº	DRAWING Nº
1	02015	CM-20351	1	02015	CM-20351
2	15468	HC-24887	2	15468	HC-24887
3	16497	HC-25292	3	16497	HC-25292
4	16932	HC-25373	4	16932	HC-25373
5	35539	CD-A1272	5	35539	CD-A1272
6	35660	CD-A1305	6	35660	CD-A1305
7	40395	CD-A1898	7	40395	CD-A1898
8	41135	CD-A2076	8	41135	CD-A2076
9	42550	CD-A2202	9	42550	CD-A2202
10	60543	SC-2078	10	60543	SC-2078
11	60544	SC-2079	11	60544	SC-2079
12	60724	SC-2213	12	60724	SC-2213
13	285603	SD-B13005	13	285603	SD-B13005
14	285123	SD-C11891	14	283628	SD-C11891
15	285446	SD-C12940	15	285449	SD-C12940
16	284955	SD-B12337	16	283650	SD-B12337
17	285037	HC-23577	17	284295	HC-23577
18	285039	SC-3100	18	284297	SC-3100
19	285048	SD-C12722	19	284301	SD-B4101
20	285439	SD-B12942	20	285439	SD-B12942
21	285443	SD-A12939	21	285443	SD-A12939
22	284381	SD-B12487	22	284381	SD-B12487
23	284453	SD-B12487	23	284453	SD-B12487
24	284992	SD-B12702	24	284993	SD-B12702
25	284996	SD-C12703	25	284997	SD-C12703
26	285000	SD-C12704	26	285001	SD-C12704
27	285004	SD-C12705	27	285005	SD-C12705
28	285012	SD-C12707	28	285011	SD-C12707
29	285015	SD-C12708	29	285015	SD-C12708
30	285032	SD-D12717	30	285032	SD-D12717
31	285033	SD-D12718	31	285033	SD-D12718
32	W11025	SD-A5058	32	W4636	SD-A677
33	W11027	SD-A4080	33	W9935	SD-A4080
34	W9942	SD-A4087	34	W9942	SD-A4087
35	W9943	SD-A4087	35	W9943	SD-A4087
36	W11031	SD-B4097	36	W9953	SD-B4097
37	W11032	SD-B4098	37	W9954	SD-B4098
38	W11033	SD-B4099	38	W9955	SD-B4099
39	W11034	SD-B5057	39	W9956	SD-B4100
40	W11039	SD-C4103	40	W9959	SD-C4103
41	W11040	SD-C4104	41	W9960	SD-C4104
42	W11041	SD-C4105	42	W9961	SD-C4105
43	W11042	SD-C4106	43	W9962	SD-C4106
44	W11043	SD-C4107	44	W9963	SD-C4107
45	W11044	SD-C4108	45	W9964	SD-C4108
46	W11045	SD-C4109	46	W9965	SD-C4109
47	W11046	SD-C4110	47	W9966	SD-C4110
48	W11047	SD-C4111	48	W9967	SD-C4111
49	W11048	SD-C4112	49	W9968	SD-C4112
50	285453	SD-C12941	50	285454	SD-C12941
51	W11053	SD-C4119	51	W9975	SD-C4119
52	W11054	SD-C4120	52	W9976	SD-C4120
53	W11055	SD-C4121	53	W9977	SD-C4121
54	W11056	SD-C4122	54	W9978	SD-C4122
55	W11057	SD-C4123	55	W9979	SD-C4123
56	W11058	SD-C4125	56	W9981	SD-C4125
57	W10037	N.D.	57	W10037	N.D.
58	W11747	HC-31397	58	W10669	HC-31397
59	W12198	SD-A6489	59	W12198	SD-A6489
60	W12027	SD-B6395	60	W12269	SD-B6395
61	W13757	SD-A6005	61	W13760	SD-A4556
62	W13762	SD-A4175	62	W13763	SD-A4175
63	W16362	SD-B8284	63	W16363	SD-B8284
64	W16569	FR.143-145	64	W16569	FR.143-145
65	285440	SD-B12942	65	285440	SD-B12942
66	283695	FR.182-184	66	283695	FR.182-184
67	285460	SD-A12944	67	285460	SD-A12944



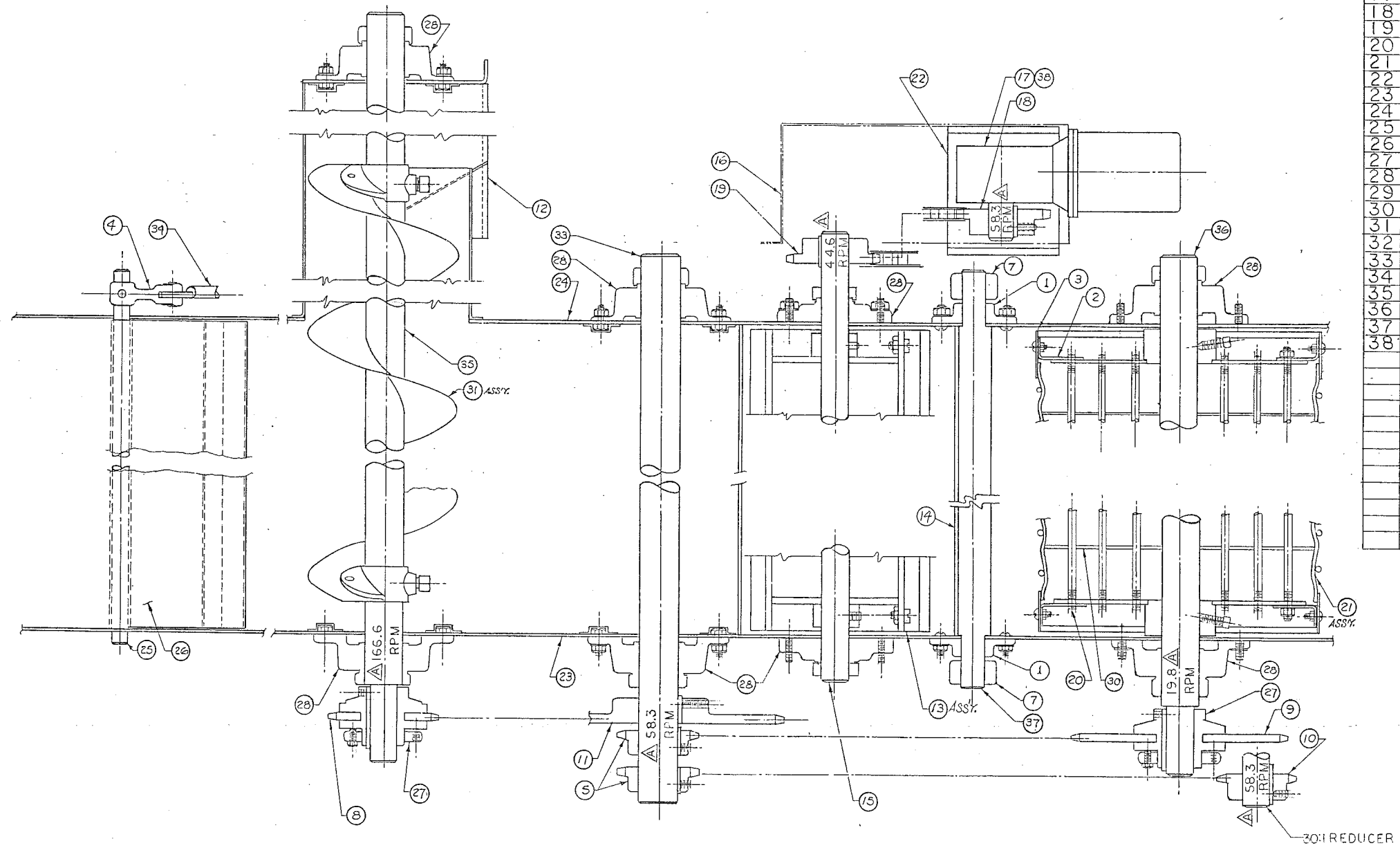
S=L **CDC**
SIMON-DAY LTD. **CARTER-DAY COMPANY**
 Winnipeg, Manitoba
 Minneapolis, MN

DESCRIPTION
 SECTION THRU SHEET METAL
 11x60 SCALPER (FANLESS)
 11x84 SCALPER (FANLESS)

ECO	NO.	BY	DATE	REVISIONS	DRAWN BY	DATE	SCALE
					MS	1 MAR 88	3/8" = 1"
DO NOT SCALE DRAWING				APPROVED BY	SHEET	1 OF 2	SD-D12905

11 x 84 CMN2RP			11 x 60 CMN2RP		
NO	PART NO	DRAWING NO	NO	PART NO	DRAWING NO
16	284351	SDC12114	16	284351	SDC 12114
17	284270	FR 143-145	17	282881	FR 143-145
22	285020	SDD12711	22	285068	SDD12711
23	285127	SDD12717	23	285127	SDD12717
24	285129	SDD12718	24	285129	SDD12718
31	W6087	33083	31	W13224	33083
38	284335	FR182-184	38	283696	FR 182-184

11 x 84 CMN2P			11 x 60 CMN2P		
Nº	PART Nº	DRAWING Nº	Nº	PART Nº	DRAWING Nº
1	02015	CM 20351	1	02015	CM 20351
2	19817	35439	2	19817	35439
3	19815	35437	3	19815	35437
4	19933	26103	4	19933	26103
5	31350	CDA 342	5	31350	CDA 342
6			6		
7	40395	CDA 1898	7	40395	CDA 1898
8	280268	SDA 7625	8	280268	SDA 7625
9	280274	SDB 4677	9	280274	SDB 4677
10	280293	ND	10	280293	ND
11	280335	ND	11	280335	ND
12	W10671	SDB 6003	12	W11743	SDB 6003
13	283628	SDC 11891	13	285123	SDC 11891
14	285011	SDC 12707	14	285012	SDC 12707
15	283650	SDB 12337	15	284955	SDB 12337
16	283653	SDC 12114	16	283653	SDC 12114
17	284186	FR 180-184	17	283695	FR 182-184
18	284286	ND	18	285139	ND
19	284289	ND	19	284289	ND
20	284295	HC 23577	20	285037	HC 23571
21	284301	SDB 4101	21	285048	SDC 12722
22	285019	SDD 12711	22	285067	SDC 12711
23	285032	SDD 12717	23	285032	SDD 12717
24	285033	SDD 12718	24	285033	SDD 12718
25	W4636	SDA 677	25	W11025	SDA 5058
26	W9956	SDB 4100	26	W11034	SDB 5057
27	W10051	ND	27	W10051	ND
28	W10060	ND	28	W10060	ND
29			29		
30	W10821	SDA 4951	30	283158	SDA 4951
31	W10669	31397	31	W11747	31397
32			32		
33	W12269	SDB 6395	33	W12027	SDB 6395
34	W12193	SDA 6484	34	W12193	SDA 6484
35	W13760	SDA 4556	35	W13757	SDA 6005
36	W13763	SDA 4175	36	W13762	SDA 4175
37	W16363	SDB 8284	37	W16362	SDB 8284
38	W20365	FR 140C	38	W16569	FR 143-145



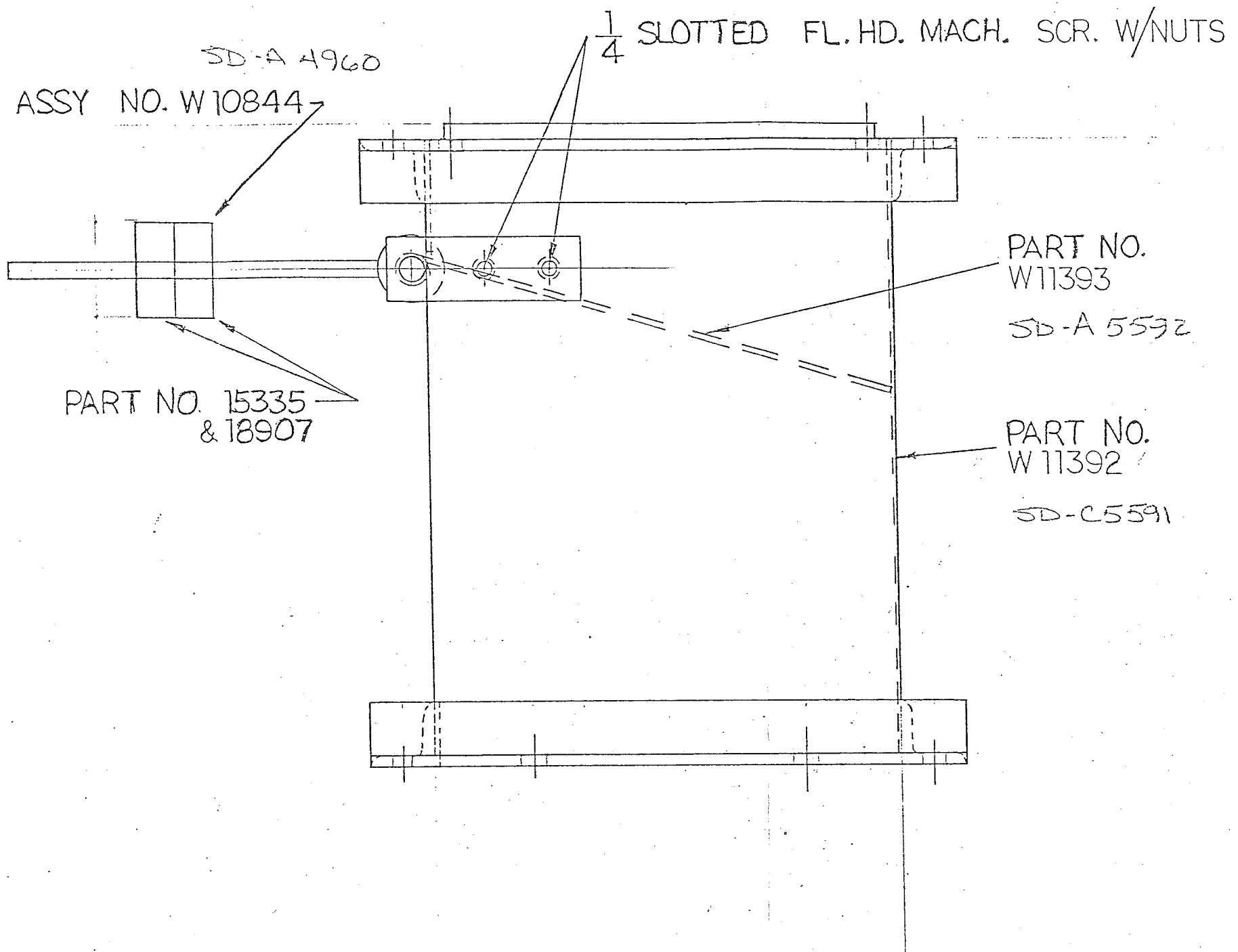
SOL
SIMON-DAY LTD.
Winnipeg, Manitoba

CDC
CARTER-DAY COMPANY
Minneapolis, MN

DESCRIPTION

SECTION THRU SHAFTING
11 x 60 SCALPER (FANLESS)
11 x 84 SCALPER (FANLESS)

NO. BY		DATE	REMARKS	DRAWN BY	DATE	SCALE	SHEET	OF	SDD12905
DO NOT SCALE DRAWING							2	2	

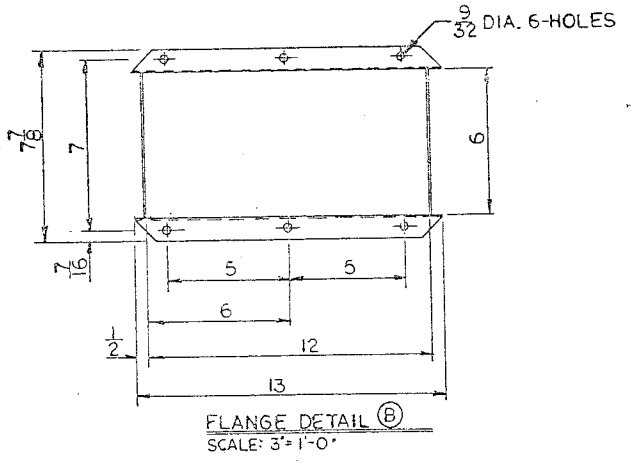
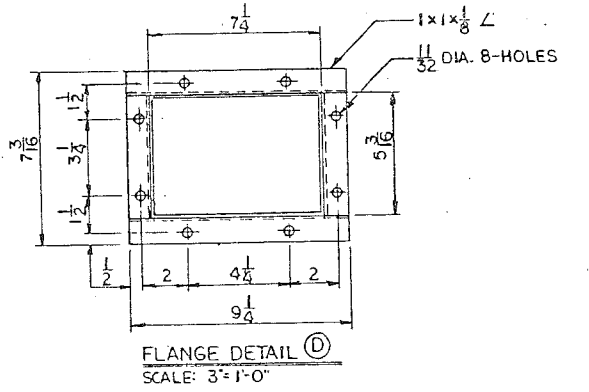
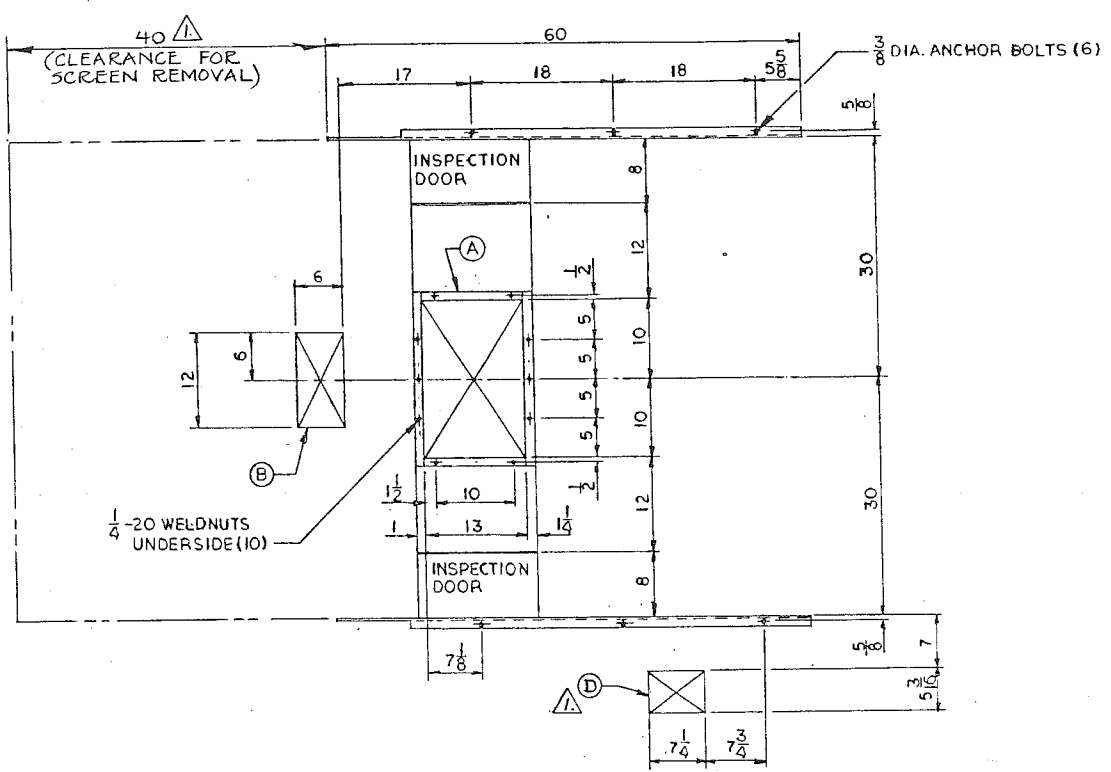


24 x 76 SCALPER CTB-1, CTC-1
11 x 36 SCALPER CMYIS
PART No. W11394

FOR OPP. HAND SEE SD-B 10393

M	B	Redrawn	8 JUN 84	MS
	A	Revised	7 MAY 83	MS
ISSUE	REVISION	DATE	BY	

ASSY, AIR LIFTINGS DISCHARGE	
DRAWN: <i>(Signature)</i>	SIMON-DAY LTD. Vancouver • Calgary • Winnipeg • Thunder Bay Toronto • Montreal
DATE: 08 JUN 84	
CHK'D: <i>(Signature)</i>	
ISSUED:	
SCALE: 1/2	
SHT: 1 OF 1	SD-B5593



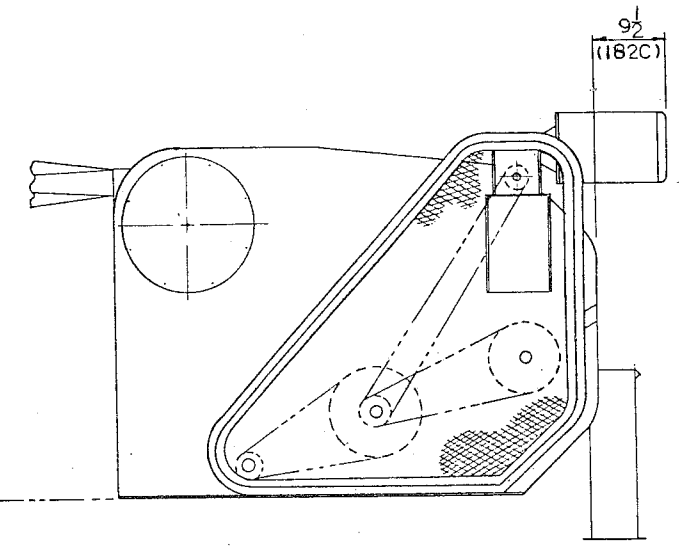
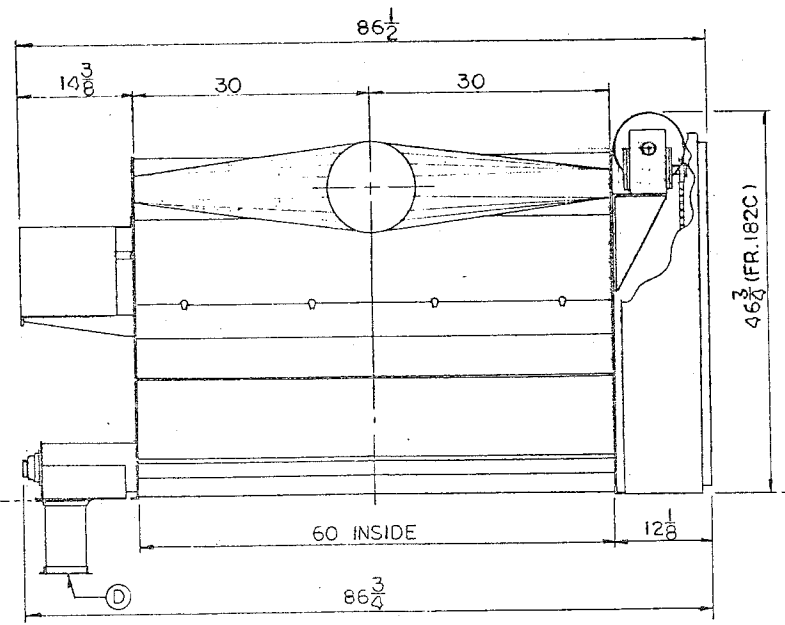
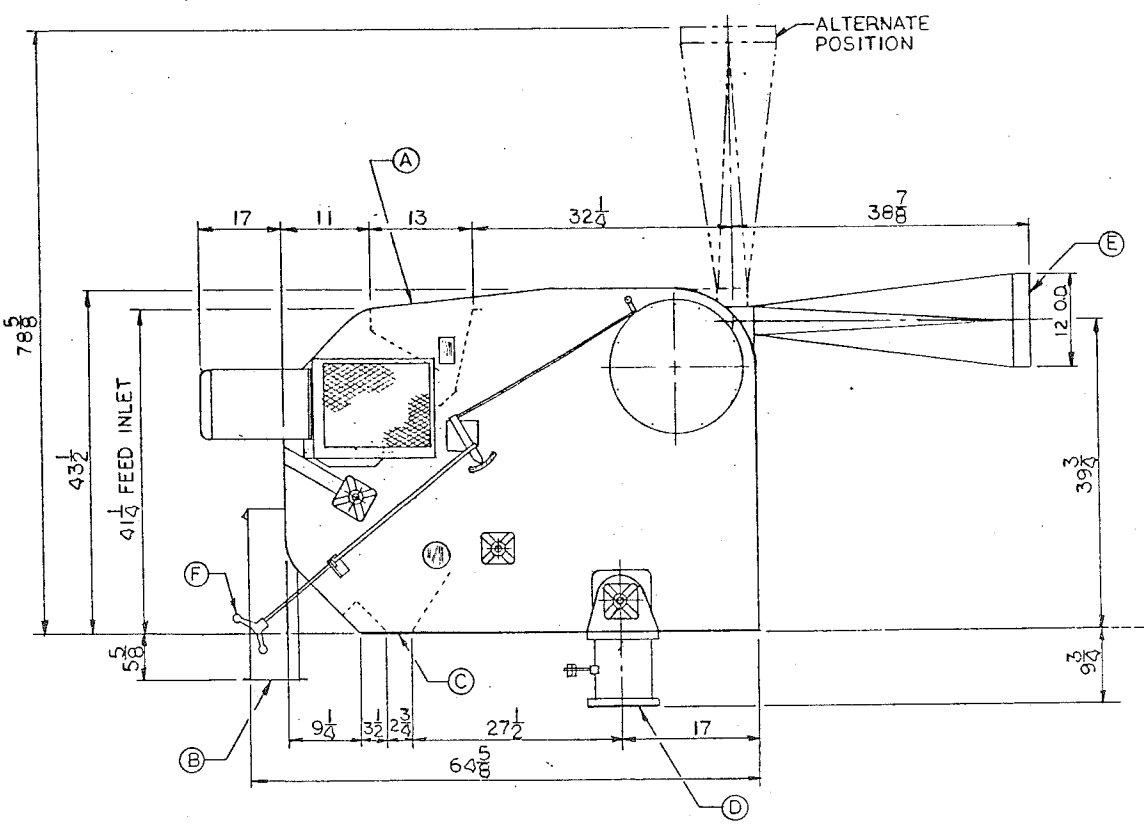
AIR REQUIRED
 3900-4500 CFM

DRIVE
 SCALPER PROPER 1HP 262-30 BQ-02 REDUCER
 FEED ROLL 1.5 HP 262-30 BQ-02 REDUCER
 SCALPER DRIVE SHAFT SPEED 58 RPM
 FEED ROLL SPEED 0-45 RPM

PRODUCT IDENTIFICATION
 A - PRODUCT FEED
 B - SCALPINGS
 C - PRODUCT DISCHARGE
 D - AIR LIFTINGS
 E - AIR DISCHARGE

CONTROL
 F - AIR CONTROL

NET WEIGHT
 1500 LBS (680 kg)



PART NO.
 9901127

TOLERANCES UNLESS SPECIFIED		NO. BY DATE		REVISIONS		DRAWN BY MS		DATE 14 OCT 88	
FRACTIONAL:	± 1/16"	1	MS	1	3.30	ADDED 40° CLEARANCE			
DECIMAL:	± .003"					3/4\"/>			
ANGULAR:	± 1/2°					3/4\"/>			
DO NOT SCALE DRAWING						CHECKED BY	APPROVED BY	SCALE 1" = 1'-0" (NOM)	SHEET OF

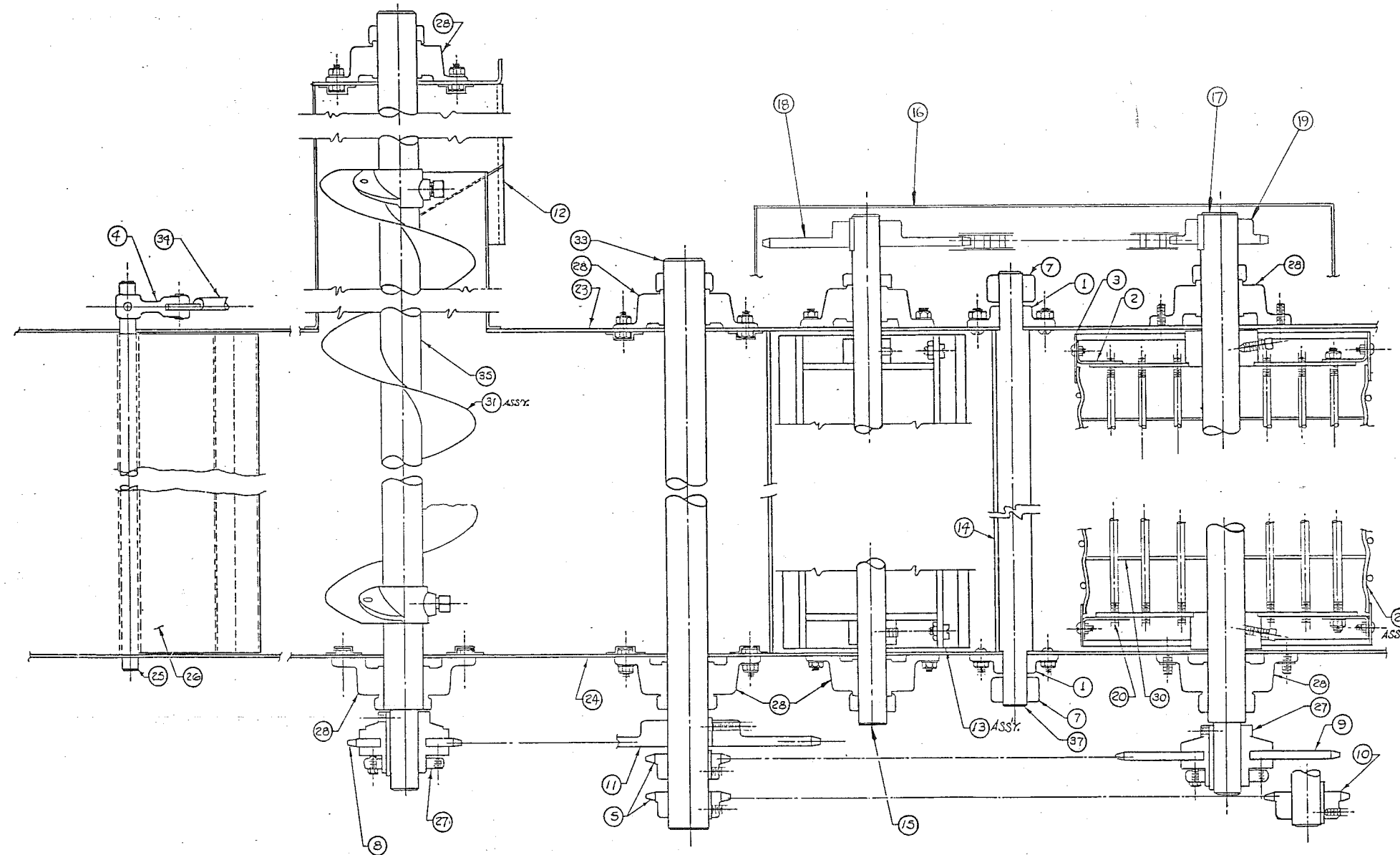
SBL
 SIMON-DAY LTD.
 Winnipeg, Manitoba

CDC
 CARTER-DAY COMPANY
 Minneapolis, MN

DESCRIPTION
 DATA, INSTALLATION
 11x60 SCALPER ASPIRATOR
 STYLE CMP2P

SD-D13359

11" x 60" R.H. MAIN DR.			11" x 60" L.H. MAIN DR.		
NO	PART NO	DRAWING NO	NO	PART NO	DRAWING NO
			1	02015	GM 20351
			2	19817	35439
			3	19815	35437
23	285608	SD-D13010	4	19933	26103
24	285129	SDD12718	5	31350	CDA 342
31	W13224	33083			
			7	40395	CDA 1898
			8	280268	SDA 7625
			9	280274	SD 84677
			10	280293	ND
			11	280335	ND
			12	W11743	SDB 6003
			13	285123	SDC 11891
			14	285012	SDC 12707
			15	284955	SD B 12337
			16	285606	SD-C13009
			17	285605	SD-B13008
			18	42086	ND
			19	40125	ND
			20	285037	HC 23571
			21	285048	SDC 12722
			23	285607	SD-D13010
			24	285033	SDD 12718
			25	W 11025	SDA 5058
			26	W 11034	SDB 5057
			27	W 10051	ND
			28	W 10060	ND
			30	283158	SDA 4951
			31	W 11747	31397
			33	W 12027	SDB 6395
			34	W 12193	SDA 6484
			35	W 13757	SDA 6005
			37	W 16362	SDB 8284

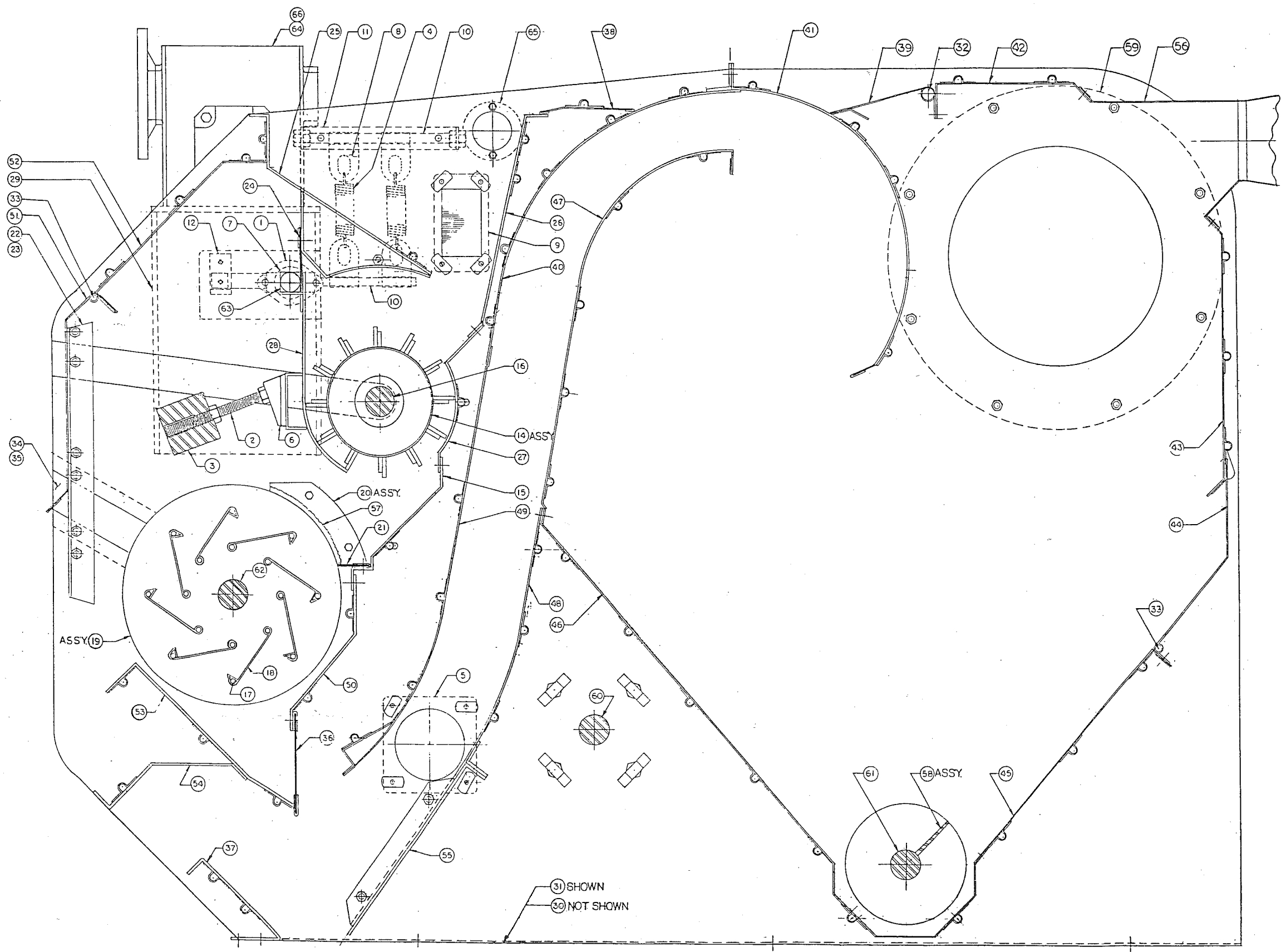


S=L SIMON-DAY LTD. Winnipeg, Manitoba	C=D CARTER-DAY COMPANY Minneapolis, MN
DESCRIPTION	
SECTION THRU SHAFTING	
11" x 60" SCALPERATOR	
SD-D13012	

PART NO.

TOLERANCES UNLESS SPECIFIED	NO.	BY	DATE	REVISIONS	REMARKS	DRAWN BY	DATE
FRACTIONS: ±1/16"						GH	5-6-88
DECIMAL: ±.003"							
ANGULAR: ±1/2°							
DO NOT SCALE DRAWING				CHECKED BY	SCALE	NONE	
				APPROVED BY	SHEET	OF	

11x60 R.H. MAIN DRIVE			11x60 L.H. MAIN DR.		
Nº	PART Nº	DRAWING Nº	Nº	PART Nº	DRAWING Nº
29	285016	SD-C12708	1	02015	CM-20351
30	285608	SD-D13010	2	15468	HC-24887
31	285129	SD-D12718	3	16497	HC-25292
58	W13224	HC-33083	4	16932	HC-25373
64	282881	FR.143-145	5	35539	CD-A1272
66	283696	FR.182-184	6	35660	CD-A1305
			7	40395	CD-A1898
			8	41135	CD-A2076
			9	42550	CD-A2202
			10	60543	SC-2078
			11	60544	SC-2079
			12	60724	SC-2213
			14	285123	SD-C11891
			15	285051	SD-C12108
			16	284955	SD-B12337
			17	285037	HC-23577
			18	285039	SC-3100
			19	285048	SD-C12722
			20	284302	SD-A12444
			21	285054	SD-A4086
			22	284381	SD-B12487
			23	284453	SD-B12487
			24	284992	SD-B12702
			25	284996	SD-C12703
			26	285000	SD-C12704
			27	285004	SD-C12705
			28	285012	SD-C12707
			29	285015	SD-C12708
			30	285607	SD-D13010
			31	285033	SD-D12718
			32	W11025	SD-A5058
			33	W11027	SD-A4080
			34	W9942	SD-A4087
			35	W9943	SD-A4087
			36	W11031	SD-B4097
			37	W11032	SD-B4098
			38	W11033	SD-B4099
			39	W11034	SD-B5057
			40	W11039	SD-C4103
			41	W11040	SD-C4104
			42	W11041	SD-C4105
			43	W11042	SD-C4106
			44	W11043	SD-C4107
			45	W11044	SD-C4108
			46	W11045	SD-C4109
			47	W11046	SD-C4110
			48	W11047	SD-C4111
			49	W11048	SD-C4112
			50	W11052	SD-C4118
			51	W11053	SD-C4119
			52	W11054	SD-C4120
			53	W11055	SD-C4121
			54	W11056	SD-C4122
			55	W11057	SD-C4123
			56	W11058	SD-C4125
			57	W10037	N.D.
			58	W11747	HC-31397
			59	W12198	SD-A6489
			60	W12027	SD-B6395
			61	W13757	SD-A6005
			62	285605	SD-B13008
			63	W16362	SD-B8284
			64	W16569	FR.143-145
			65	284452	SD-A12520
			66	283695	FR.182-184



S-L **C-D**
SIMON-DAY LTD. **CARTER-DAY COMPANY**
 Winnipeg, Manitoba Winnipeg, MN

DESCRIPTION
 SECTION THRU SHEET METAL

11" x 60" SCALPATOR

TOLERANCES UNLESS SPECIFIED
 FRACTIONS: ±1/16"
 DECIMAL: ±.003"
 ANGULAR: ±1/2°

NO. BY DATE REMARKS DRAWN BY GH DATE 5-6-88
 REVISIONS CHECKED BY SCALE 3/8
 DO NOT SCALE DRAWING APPROVED BY SHEET OF SD-D13011

PART NO.

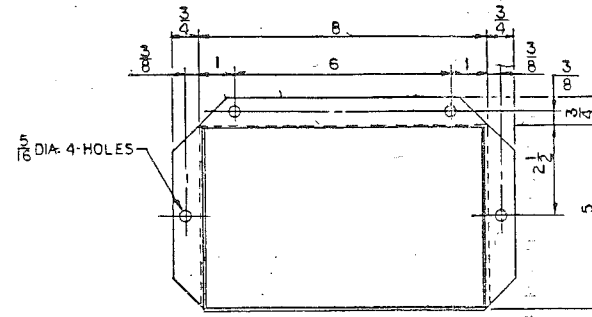
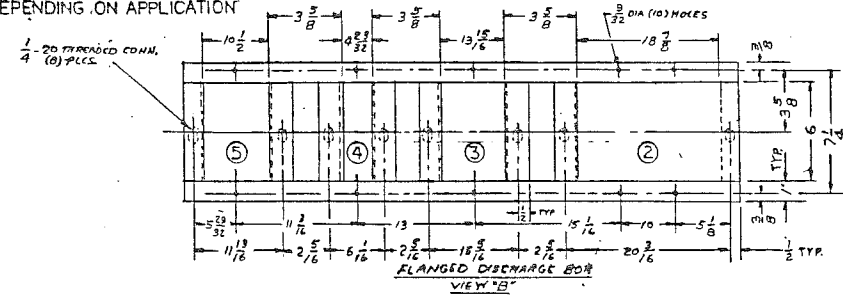
SCALPER DATA

AIR: 3900-4500 CU. FT. PER MIN.
 DRIVE: 1 HP GEARMOTOR 262-30 BQ-02

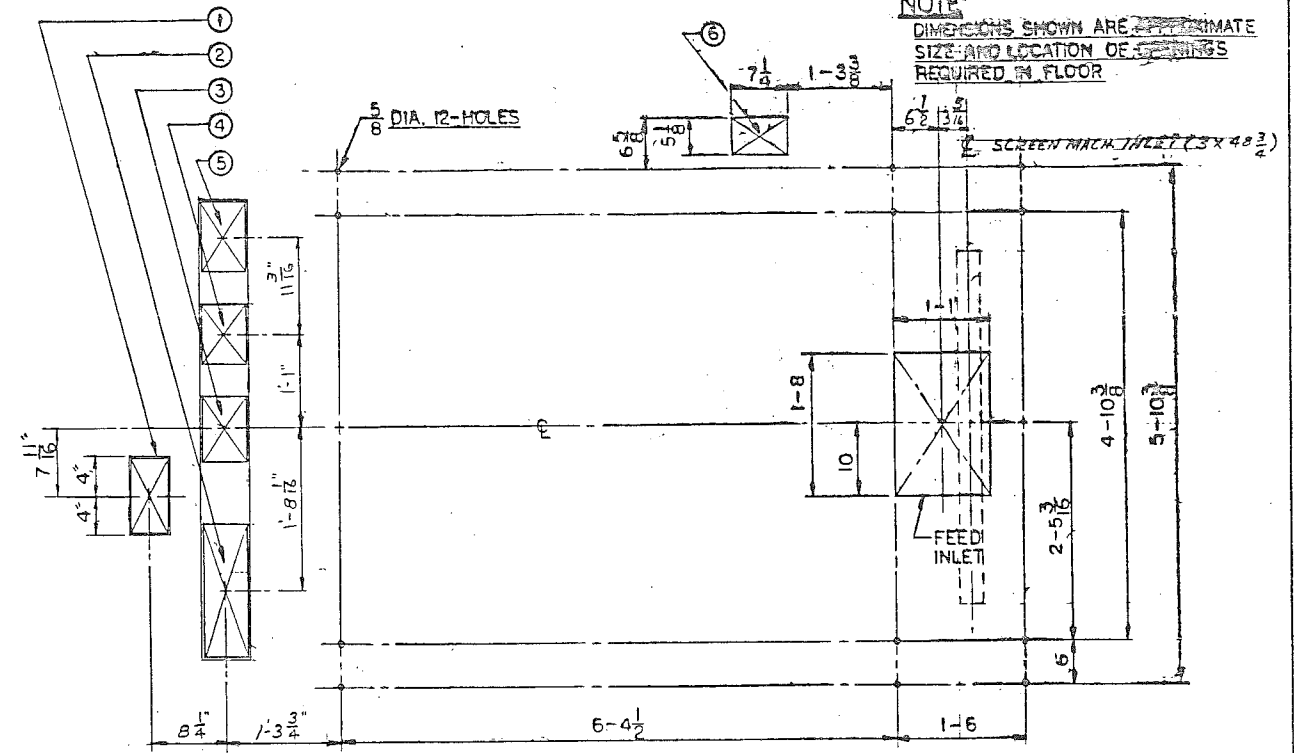
MACHINE PROPER DATA

DRIVE: 1 1/2 H.P. 1800 R.P.M. MOTOR-11G
 *CAPACITY: 800-800 BU. PER HR.
 *DEPENDENT ON APPLICATION

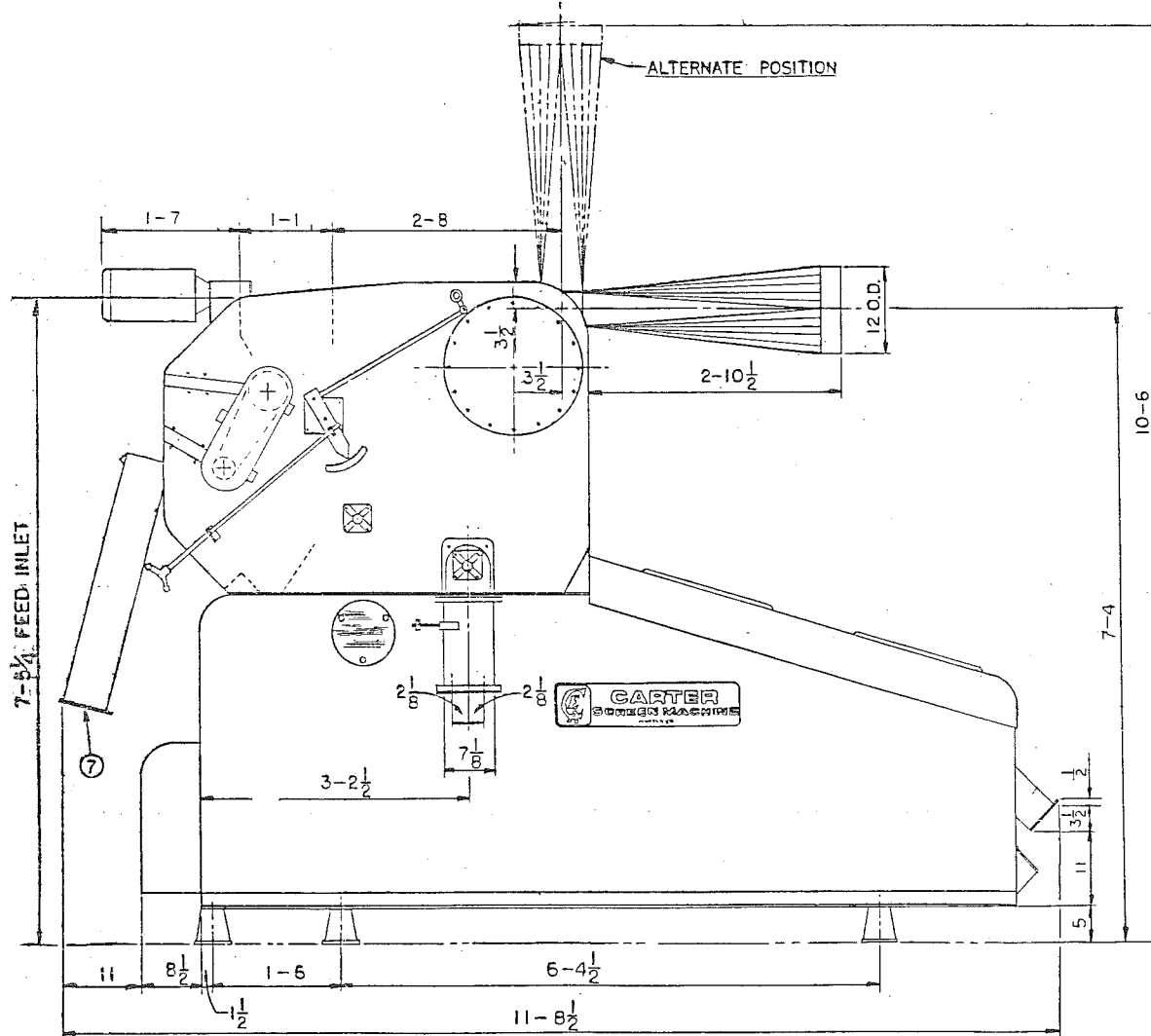
No	WHEN CLEANING *DEPENDENT ON SCREEN SELECTIONS		
	BARLEY	WHEAT	RAPE
1	OATS, HEADS	OATS, HEADS	OATS, WHEAT, BALLS
2	CLEAN BARLEY	CLEAN WHEAT	CLEAN RAPE
3	CLEAN BARLEY	CLEAN WHEAT	CLEAN RAPE
4	CRACKS, SEEDS	CRACKS, WEED SEEDS	SMALL SEEDS, SAND
5	CRACKS, SEEDS	CRACKS, WEED SEEDS	SMALL SEEDS, SAND
6	DUST, CHAFF, SMALL SEEDS	DUST, CHAFF, SMALL SEEDS	DUST, SMALL SEEDS
7	STICKS, STRAW	STICKS, STRAW	STICKS, STRAW



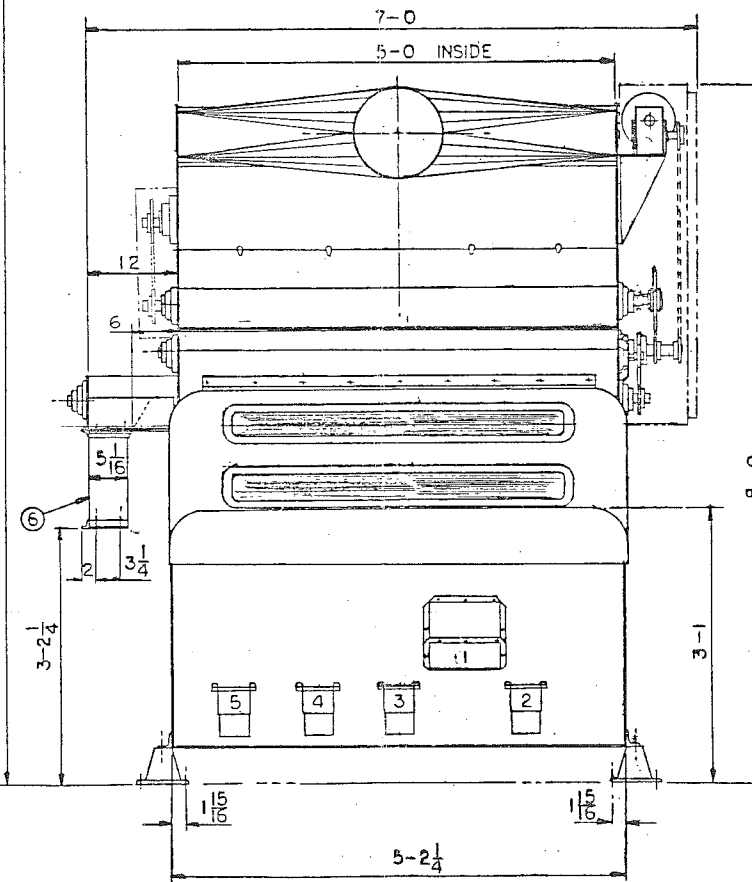
VIEW A NO 1 DISCHARGE FLANGE



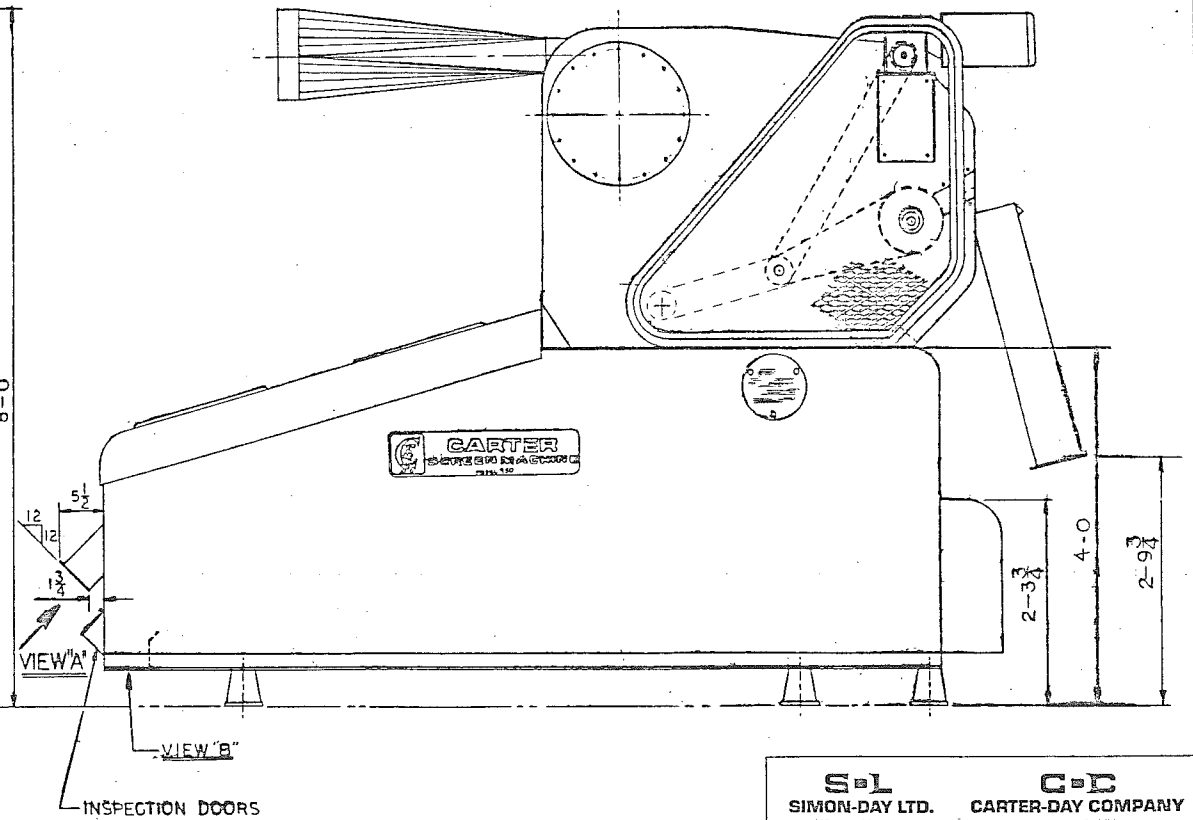
FLOOR PLAN



RIGHT SIDE VIEW



ELEVATION



LEFT SIDE VIEW

NOTE: DIMENSIONS SHOWN ARE APPROXIMATE SIZE AND LOCATION OF SCREENS REQUIRED IN FLOOR

S-D
 SIMON-DAY LTD. CARTER-DAY COMPANY
 Winnipeg, Manitoba Minneapolis, MN

DESCRIPTION
 DATA INSTALLATION
 11" X 60" SCALPERATOR W/CONSTANT SPEED POSITIVE FEED ROLL.

TOLERANCES UNLESS SPECIFIED	NO.	BY	DATE	REMARKS
FRACTIONS: ±1/16"				
DECIMAL: ±0.003"				
ANGULAR: ±1/2°				
DO NOT SCALE DRAWING				

950 SCREEN MACHINE (STYLE CPS1) WITH 11X60 SCALPER (STYLE CMP2) WITH CONSTANT SPEED POSITIVE FEED ROLL.

PART NO.

SD-D13013